

09/855575

ant already of record

L21 ANSWER 9 OF 21 CAPLUS COPYRIGHT 2001 ACS (Continued)



REFERENCE COUNT:
REFERENCE(S):

- 39
 (1) Akerlund, L; PNAS Lett 1990, V260, P73 CAPLUS
 (2) Balasubramanian, A; Peptides 1997, V18, P445 CAPLUS
 (3) Bard, J; J Biol Chem 1995, V270, P26762 CAPLUS
 (4) Bing, C; Biochem Soc Trans 1996, V24, P559 CAPLUS
 (5) Corp, E; Am J Physiol 1990, V259, P317 CAPLUS
 ALL CITATIONS AVAILABLE IN THE RE FORMAT

L21 ANSWER 10 OF 21 CAPLUS COPYRIGHT 2001 ACS

AB Title compds. T-2-CONNH(CH2)8-CO-Y-(CH2)NR [I; T = (un)substituted Ph, naphthyl, heteroarom., N, O, S, or T1TC2U; T1, T2 = (un)substituted Ph; U = H, alkoxy, OPh; Z = bond, O, NH, CH2, CH2CH2, CH2O, CH2NH; B = amidine-contg. group; Y = O, NR1; R1 = H, (un)substituted alkyl, CH2Ph; n = 1-3; R = (un)substituted Ph], neuropeptide Y antagonists, were prepd. Thus, (R)-R2NH(C(=NH)NH(CH2)3CH(NHR3)CONHR4 [I; R2 = 2,2,5,7,8-pentamethylchroman-6-sulfonyl (Pmc); R3 = Pmc; R4 = CH2C6H4CH2NHCO2CH2Ph

4] was prepd. from Pmc-D-Arg(Pmc)OH and 4-PHCH2O2CNCNCH2C6H4CH2CONH2, Pmc-protected, and diphenylacetylated, to give II (R2 = Pmc; R3 = COCHPh2; R4 = CH2C6H4CH2NH2-4), which was N-acetylated and deprotected to give II-trifluoroacetate (R2 = H; R3 = COCHPh2; R4 = CH2C6H4CH2NHAc-4).

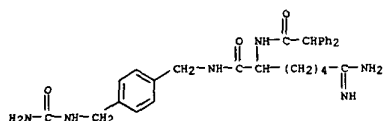
I showed activity as neuropeptide Y antagonists in both in vitro (at 10-8 to 10-5 M) and in vivo tests (at 0.001 to 10 mg/kg).
 ACCESSION NUMBER: 1997:473595 CAPLUS
 DOCUMENT NUMBER: 127:81788
 TITLE: Preparation of amino acid derivatives as neuropeptide Y antagonists
 INVENTOR(S): Engel, Wolfhard; Eberlein, Wolfgang; Rudolf, Klaus; Doods, Henri; Wieland, Heike-Andrea; Willim, Klaus-Dieter; Entzeroth, Michael; Wiene, Wolfgang
 PATENT ASSIGNEE(S): Dr. Karl Thomae GmbH, Germany
 SOURCE: Ger. Offen., 117 pp.
 CODEN: GWKXBX
 DOCUMENT TYPE: Patent
 LANGUAGE: German
 FAMILY ACC. NUM. COUNT: 1
 PATENT INFORMATION:

PATENT NO.	KIND	DATE	APPLICATION NO.	DATE
DE 19544687	A1	19970605	DE 1995-19544687	19951130
WO 9719911	A1	19970605	WO 1996-EP5222	19961126
W: CA, JP, MX, US				
RW: AT, BE, CH, DE, DK, ES, FI, FR, GB, GR, IE, IT, LU, MC, NL, PT, SE				
EP 885186	A1	19981223	EP 1996-941032	19961126
R: AT, BE, CH, DE, DK, ES, FR, GB, GR, IT, LI, LU, NL, SE, MC, PT, IE, FI				
JP 200001390	T2	20000208	JP 1997-520166	19961126
US 6114390	A	20000905	US 1997-950113	19971014
PRIORITY APPLM. INFO.: DE 1995-19544687 A 19951130				
WO 1996-EP5222 W 19961126				
US 1998-945048 A 19980210				

OTHER SOURCE(S): MARPAT 127:81788
 IT 191871-87-1P
 RL: BAC (Biological activity or effector, except adverse); RCT (Reactant); SPN (Synthetic preparation); THU (Therapeutic use); BIOL (Biological study); PREP (Preparation); USES (Uses) (prepn. of amino acid derivs. as neuropeptide Y antagonists)
 RN 191871-87-1 CAPLUS
 CN Benzeneacetamide,
 N-[6-amino-1-[[[4-[[[amino]methyl]phenyl]methyl]amino]carbonyl]-6-imino]hexyl]-.alpha.-phenyl-, diacetate (9CI)
 (CA INDEX NAME)

L21 ANSWER 10 OF 21 CAPLUS COPYRIGHT 2001 ACS (Continued)

CM 1
 CRN 191871-86-0
 CMF C30 H36 N6 O3



CM 2
 CRN 64-19-7
 CMF C2 H4 O2

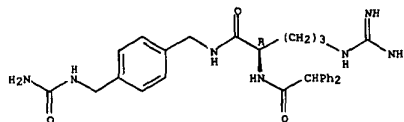


- IT 191868-13-0P 191868-14-1P 191868-30-1P
 191868-31-2P 191868-34-5P 191868-50-5P
 191868-51-6P 191868-53-8P 191868-70-9P
 191868-71-0P 191868-73-2P 191868-74-3P
 191868-76-5P 191868-77-6P 191868-79-8P
 191868-80-1P 191868-95-8P 191868-96-9P
 191868-99-2P 191869-00-8P 191869-02-0P
 191869-03-1P 191869-06-4P 191869-07-5P
 191869-10-0P 191869-11-1P 191869-13-3P
 191869-14-4P 191869-34-8P 191869-35-9P
 191870-04-9P 191870-05-0P 191870-07-2P
 191870-08-3P 191870-10-7P 191870-11-8P
 191870-13-0P 191870-14-1P 191870-42-5P
 191870-43-6P 191870-55-0P 191870-66-3P
 191870-67-4P 191870-71-0P 191870-72-1P
 191870-80-1P 191870-82-3P 191870-83-4P
 191870-85-6P 191870-86-7P 191870-88-9P
 191870-89-0P 191870-91-4P 191870-92-5P
 191870-94-7P 191870-95-8P 191870-97-0P
 191870-98-1P 191871-00-8P 191871-01-9P
 191871-03-1P 191871-04-2P 191871-06-4P
 191871-07-5P 191871-09-7P 191871-10-0P
 191871-12-2P 191871-13-3P 191871-16-6P
 191871-17-7P 191871-31-5P 191871-47-3P
 191871-48-4P 191871-49-5P 191871-53-8P
 191871-54-2P 191871-63-3P 191871-64-4P
 191871-66-6P 191871-67-7P 191871-80-4P
 191871-86-0P 191871-88-2P 191872-02-3P
 191872-03-4P 191872-04-5P 191872-05-6P
 191872-07-8P 191872-08-9P 191872-10-3P
 191872-11-4P 191872-26-1P 191872-27-2P

L21 ANSWER 10 OF 21 CAPLUS COPYRIGHT 2001 ACS (Continued)

191872-38-5P 191872-39-6P 191872-48-8P
 191872-50-1P 191872-52-3P 191872-55-6P
 191872-56-7P 191872-61-4P 191872-62-5P
 191872-68-1P 191872-69-2P
 RL: BAC (Biological activity or effector, except adverse); SPN (Synthetic preparation); THU (Therapeutic use); BIOL (Biological study); PREP (Preparation); USES (Uses) (prepn. of amino acid derivs. as neuropeptide Y antagonists)
 RN 191868-13-0 CAPLUS
 CN Benzeneacetamide,
 N-[[1(R)-1-[[[4-[[[amino]methyl]phenyl]methyl]amino]carbonyl]-4-[[amino]imino]methyl]amino]butyl]-.alpha.-phenyl-, diacetate (9CI) (CA INDEX NAME)

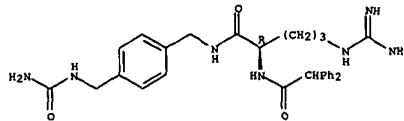
Absolute stereochemistry.



RN 191868-14-1 CAPLUS
 CN Benzeneacetamide,
 N-[[1(R)-1-[[[4-[[[amino]methyl]phenyl]methyl]amino]carbonyl]-4-[[amino]imino]methyl]amino]butyl]-.alpha.-phenyl-, mono(trifluoroacetate) (9CI) (CA INDEX NAME)

CM 1
 CRN 191868-13-0
 CMF C29 H35 N7 O3

Absolute stereochemistry.

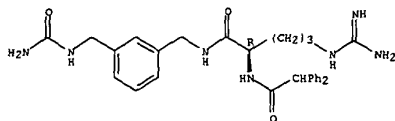


CM 2
 CRN 76-05-1
 CMF C2 H F3 O2



RN 191868-30-1 CAPLUS
 CN Benzeneacetamide,
 N-[1-[[[3-[[[(aminocarbonyl)amino]methyl]phenyl]methyl]amino]carbonyl]-4-[(aminoiminomethyl)amino]butyl]-.alpha.-phenyl-, (R)-
 (9CI) (CA INDEX NAME)

Absolute stereochemistry.

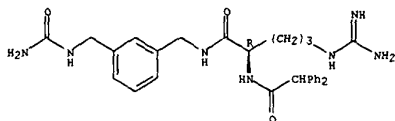


RN 191868-31-2 CAPLUS
 CN Benzeneacetamide,
 N-[1-[[[3-[[[(aminocarbonyl)amino]methyl]phenyl]methyl]amino]carbonyl]-4-[(aminoiminomethyl)amino]butyl]-.alpha.-phenyl-, (R)-,
 monoacetate (9CI) (CA INDEX NAME)

CM 1

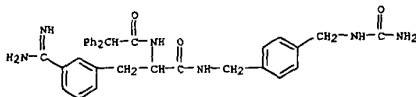
CRN 191868-30-1
 CMF C29 H35 N7 O3

Absolute stereochemistry.



CM 2

CRN 64-19-7
 CMF C2 H4 O2



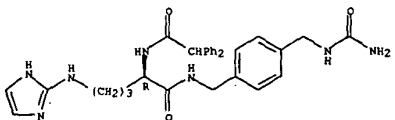
CM 2

CRN 64-19-7
 CMF C2 H4 O2



RN 191868-53-8 CAPLUS
 CN Benzeneacetamide,
 N-[1-[[[4-[[[(aminocarbonyl)amino]methyl]phenyl]methyl]amino]carbonyl]-4-[(1H-imidazol-2-ylamino)butyl]-.alpha.-phenyl-,
 monohydroiodide, (R)- (9CI) (CA INDEX NAME)

Absolute stereochemistry.



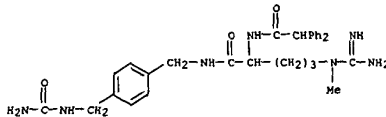
• HI

RN 191868-70-9 CAPLUS
 CN Benzeneacetamide,
 N-[1-[[[4-[[[(aminocarbonyl)amino]methyl]phenyl]methyl]amino]carbonyl]-4-[(aminoiminomethyl)amino]butyl]-3,4-dichloro-, (R)-
 (9CI) (CA INDEX NAME)

Absolute stereochemistry.

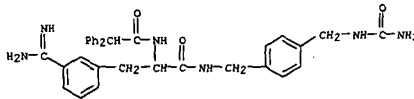


RN 191868-34-5 CAPLUS
 CN Benzeneacetamide,
 N-[1-[[[4-[[[(aminocarbonyl)amino]methyl]phenyl]methyl]amino]carbonyl]-4-[(aminoiminomethyl)amino]butyl]-.alpha.-phenyl-,
 monohydrochloride (9CI) (CA INDEX NAME)



• HCl

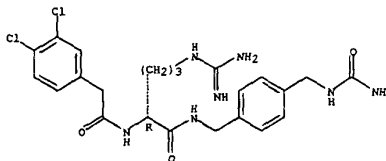
RN 191868-50-5 CAPLUS
 CN Benzenepropenamide, N-[[4-[[[(aminocarbonyl)amino]methyl]phenyl]methyl]-3-
 (aminoiminomethyl)-.alpha.-[[diphenylacetyl]amino]- (9CI) (CA INDEX NAME)



RN 191868-51-6 CAPLUS
 CN Benzenepropenamide, N-[[4-[[[(aminocarbonyl)amino]methyl]phenyl]methyl]-3-
 (aminoiminomethyl)-.alpha.-[[diphenylacetyl]amino]-, monoacetate (9CI)
 (CA INDEX NAME)

CM 1

CRN 191868-50-5
 CMF C33 H34 N6 O3

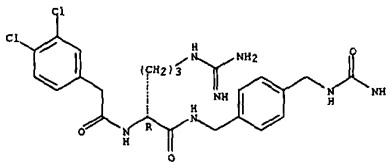


RN 191868-71-0 CAPLUS
 CN Benzeneacetamide,
 N-[1-[[[4-[[[(aminocarbonyl)amino]methyl]phenyl]methyl]amino]carbonyl]-4-[(aminoiminomethyl)amino]butyl]-3,4-dichloro-, (R)-,
 mono(trifluoroacetate) (9CI) (CA INDEX NAME)

CM 1

CRN 191868-70-9
 CMF C23 H29 Cl2 N7 O3

Absolute stereochemistry.



CM 2

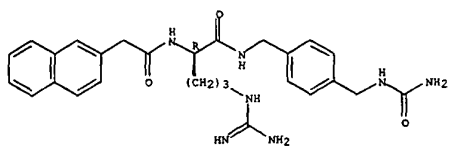
CRN 76-05-1
 CMF C2 H F3 O2



RN 191868-73-2 CAPLUS
 CN 2-Naphthaleneacetamide,
 N-[1-[[[4-[[[(aminocarbonyl)amino]methyl]phenyl]methyl]amino]carbonyl]-4-[(aminoiminomethyl)amino]butyl]-, (R)- (9CI) (CA INDEX NAME)

L21 ANSWER 10 OF 21 CAPLUS COPYRIGHT 2001 ACS (Continued)
INDEX NAME)

Absolute stereochemistry.

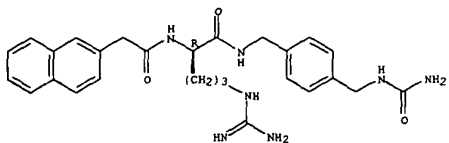


RN 191868-74-3 CAPLUS
CN 2-Naphthaleneacetamide,
N-[1-[[[4-[[[(aminocarbonyl)amino]methyl]phenyl]methyl]amino]carbonyl]-4-[(aminoiminomethyl)amino]butyl]-, (R)-, mono(trifluoroacetate) (9CI) (CA INDEX NAME)

CM 1

CRN 191868-73-2
CMF C27 H33 N7 O3

Absolute stereochemistry.



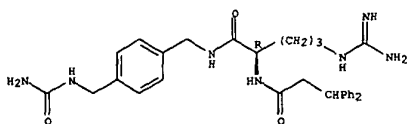
CM 2

CRN 76-05-1
CMF C2 H F3 O2



RN 191868-76-5 CAPLUS
CN 1H-Indole-3-acetamide,
N-[1-[[[4-[[[(aminocarbonyl)amino]methyl]phenyl]methyl]amino]carbonyl]-4-[(aminoiminomethyl)amino]butyl]-5-bromo-, (R)- (9CI) (CA INDEX NAME)

L21 ANSWER 10 OF 21 CAPLUS COPYRIGHT 2001 ACS (Continued)

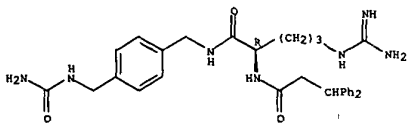


RN 191868-80-1 CAPLUS
CN Benzeneacetamide,
N-[1-[[[4-[[[(aminocarbonyl)amino]methyl]phenyl]methyl]amino]carbonyl]-4-[(aminoiminomethyl)amino]butyl]-.beta.-phenyl-, (R)-, mono(trifluoroacetate) (9CI) (CA INDEX NAME)

CM 1

CRN 191868-79-8
CMF C30 H37 N7 O3

Absolute stereochemistry.



CM 2

CRN 76-05-1
CMF C2 H F3 O2

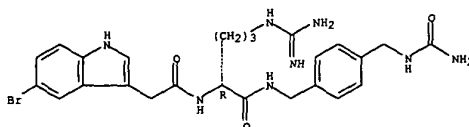


RN 191868-95-8 CAPLUS
CN Benzeneacetamide,
4-amino-N-[1-[[[4-[[[(aminocarbonyl)amino]methyl]phenyl]methyl]amino]carbonyl]-4-[(aminoiminomethyl)amino]butyl]-3,5-dichloro-, (R)- (9CI) (CA INDEX NAME)

Absolute stereochemistry.

L21 ANSWER 10 OF 21 CAPLUS COPYRIGHT 2001 ACS (Continued)
(CA INDEX NAME)

Absolute stereochemistry.

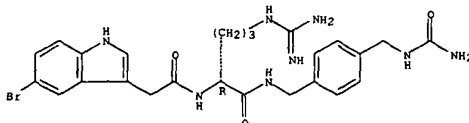


RN 191868-77-6 CAPLUS
CN 1H-Indole-3-acetamide,
N-[1-[[[4-[[[(aminocarbonyl)amino]methyl]phenyl]methyl]amino]carbonyl]-4-[(aminoiminomethyl)amino]butyl]-5-bromo-, (R)-, mono(trifluoroacetate) (9CI) (CA INDEX NAME)

CM 1

CRN 191868-76-5
CMF C25 H31 Br N8 O3

Absolute stereochemistry.



CM 2

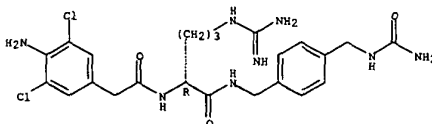
CRN 76-05-1
CMF C2 H F3 O2



RN 191868-79-8 CAPLUS
CN Benzeneacetamide,
N-[1-[[[4-[[[(aminocarbonyl)amino]methyl]phenyl]methyl]amino]carbonyl]-4-[(aminoiminomethyl)amino]butyl]-.beta.-phenyl-, (R)- (9CI) (CA INDEX NAME)

Absolute stereochemistry.

L21 ANSWER 10 OF 21 CAPLUS COPYRIGHT 2001 ACS (Continued)

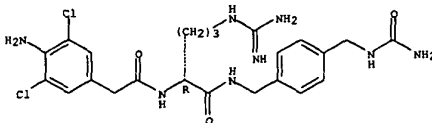


RN 191868-96-9 CAPLUS
CN Benzeneacetamide,
4-amino-N-[1-[[[4-[[[(aminocarbonyl)amino]methyl]phenyl]methyl]amino]carbonyl]-4-[(aminoiminomethyl)amino]butyl]-3,5-dichloro-, (R)-, mono(trifluoroacetate) (9CI) (CA INDEX NAME)

CM 1

CRN 191868-95-8
CMF C23 H30 Cl2 N8 O3

Absolute stereochemistry.



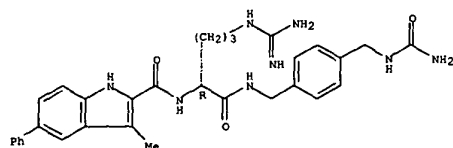
CM 2

CRN 76-05-1
CMF C2 H F3 O2



RN 191868-99-2 CAPLUS
CN 1H-Indole-2-carboxamide,
N-[1-[[[4-[[[(aminocarbonyl)amino]methyl]phenyl]methyl]amino]carbonyl]-4-[(aminoiminomethyl)amino]butyl]-3-methyl-5-phenyl-, (R)- (9CI) (CA INDEX NAME)

Absolute stereochemistry.

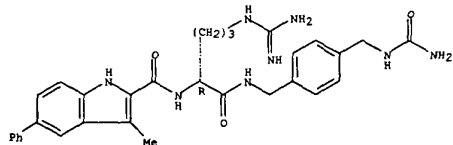


RN 191869-00-8 CAPLUS
 CN 1H-Indole-2-carboxamide,
 N-[1-[[[4-[[[(aminocarbonyl)amino]methyl]phenyl]methyl]amino]carbonyl]-4-[(aminoiminomethyl)amino]butyl]-3-methyl-5-phenyl-, (R)-, mono(trifluoroacetate) (9CI) (CA INDEX NAME)

CM 1

CRN 191868-99-2
 CHF C31 H36 N8 O3

Absolute stereochemistry.

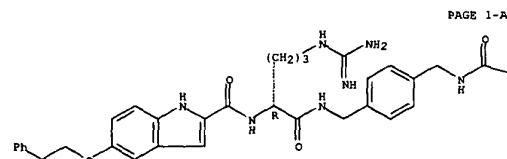


CM 2

CRN 76-05-1
 CHF C2 H F3 O2



RN 191869-02-0 CAPLUS
 CN Benzeneacetamide,
 N-[1-[[[4-[[[(aminocarbonyl)amino]methyl]phenyl]methyl]amino]carbonyl]-4-[(aminoiminomethyl)amino]butyl]-4-(benzoylamino)-, (R)- (9CI) (CA INDEX NAME)



PAGE 1-A

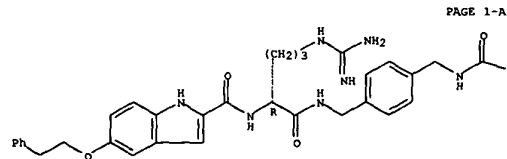
NH2

RN 191869-07-5 CAPLUS
 CN 1H-Indole-2-carboxamide,
 N-[1-[[[4-[[[(aminocarbonyl)amino]methyl]phenyl]methyl]amino]carbonyl]-4-[(aminoiminomethyl)amino]butyl]-5-(2-phenylethoxy)-, (R)-, mono(trifluoroacetate) (9CI) (CA INDEX NAME)

CM 1

CRN 191869-06-4
 CHF C32 H38 N8 O4

Absolute stereochemistry.

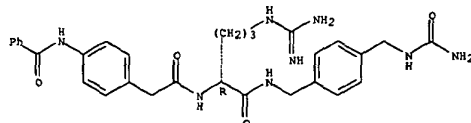


PAGE 1-A

NH2

PAGE 1-B

Absolute stereochemistry.

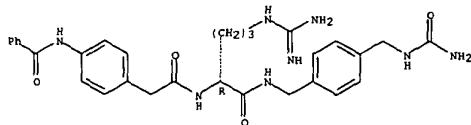


RN 191869-03-1 CAPLUS
 CN Benzeneacetamide,
 N-[1-[[[4-[[[(aminocarbonyl)amino]methyl]phenyl]methyl]amino]carbonyl]-4-[(aminoiminomethyl)amino]butyl]-4-(benzoylamino)-, (R)-, mono(trifluoroacetate) (9CI) (CA INDEX NAME)

CM 1

CRN 191869-02-0
 CHF C30 H36 N8 O4

Absolute stereochemistry.



CM 2

CRN 76-05-1
 CHF C2 H F3 O2



RN 191869-06-4 CAPLUS
 CN 1H-Indole-2-carboxamide,
 N-[1-[[[4-[[[(aminocarbonyl)amino]methyl]phenyl]methyl]amino]carbonyl]-4-[(aminoiminomethyl)amino]butyl]-5-(2-phenylethoxy)-, (R)- (9CI) (CA INDEX NAME)

Absolute stereochemistry.

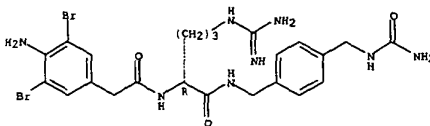
CM 2

CRN 76-05-1
 CHF C2 H F3 O2



RN 191869-10-0 CAPLUS
 CN Benzeneacetamide,
 4-amino-N-[1-[[[4-[[[(aminocarbonyl)amino]methyl]phenyl]methyl]amino]carbonyl]-4-[(aminoiminomethyl)amino]butyl]-3,5-dibromo-, (R)- (9CI) (CA INDEX NAME)

Absolute stereochemistry.

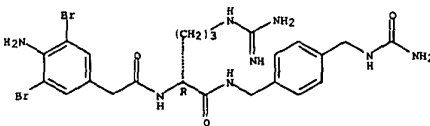


RN 191869-11-1 CAPLUS
 CN Benzeneacetamide,
 4-amino-N-[1-[[[4-[[[(aminocarbonyl)amino]methyl]phenyl]methyl]amino]carbonyl]-4-[(aminoiminomethyl)amino]butyl]-3,5-dibromo-, (R)-, mono(trifluoroacetate) (9CI) (CA INDEX NAME)

CM 1

CRN 191869-10-0
 CHF C23 H30 Br2 N8 O3

Absolute stereochemistry.



CM 2

L21 ANSWER 10 OF 21 CAPLUS COPYRIGHT 2001 ACS (Continued)

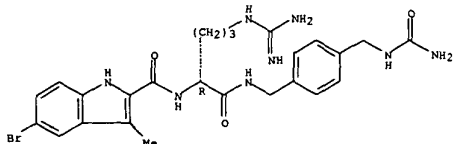
CRN 76-05-1
CMF C2 H F3 O2



RN 191869-13-3 CAPLUS
CN 1H-Indole-2-carboxamide,
N-[1-[[[4-[[[(aminocarbonyl)amino]methyl]phenyl]methyl]amino]carbonyl]-4-[(aminoiminomethyl)amino]butyl]-5-bromo-3-methyl-, (R)- (9CI) (CA INDEX NAME)

ethyl]amino]carbonyl]-4-[(aminoiminomethyl)amino]butyl]-5-bromo-3-methyl-, (R)- (9CI) (CA INDEX NAME)

Absolute stereochemistry.



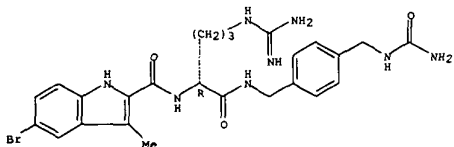
RN 191869-14-4 CAPLUS
CN 1H-Indole-2-carboxamide,
N-[1-[[[4-[[[(aminocarbonyl)amino]methyl]phenyl]methyl]amino]carbonyl]-4-[(aminoiminomethyl)amino]butyl]-5-bromo-3-methyl-, (R)-, mono(trifluoroacetate) (9CI) (CA INDEX NAME)

ethyl]amino]carbonyl]-4-[(aminoiminomethyl)amino]butyl]-5-bromo-3-methyl-, (R)-, mono(trifluoroacetate) (9CI) (CA INDEX NAME)

CM 1

CRN 191869-13-3
CMF C25 H31 Br N8 O3

Absolute stereochemistry.



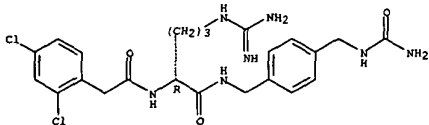
L21 ANSWER 10 OF 21 CAPLUS COPYRIGHT 2001 ACS (Continued)

CRN 76-05-1
CMF C2 H F3 O2



RN 191870-04-9 CAPLUS
CN Benzeneacetamide,
N-[1-[[[4-[[[(aminocarbonyl)amino]methyl]phenyl]methyl]amino]carbonyl]-4-[(aminoiminomethyl)amino]butyl]-2,4-dichloro-, (R)- (9CI) (CA INDEX NAME)

Absolute stereochemistry.

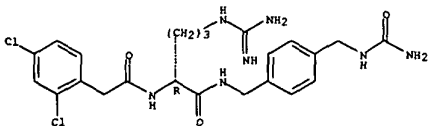


RN 191870-05-0 CAPLUS
CN Benzeneacetamide,
N-[1-[[[4-[[[(aminocarbonyl)amino]methyl]phenyl]methyl]amino]carbonyl]-4-[(aminoiminomethyl)amino]butyl]-2,4-dichloro-, (R)-, mono(trifluoroacetate) (9CI) (CA INDEX NAME)

CM 1

CRN 191870-04-9
CMF C23 H29 Cl2 N7 O3

Absolute stereochemistry.



CM 2

CRN 76-05-1

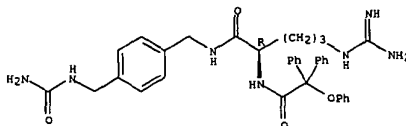
L21 ANSWER 10 OF 21 CAPLUS COPYRIGHT 2001 ACS (Continued)

CM 2
CRN 76-05-1
CMF C2 H F3 O2



RN 191869-34-8 CAPLUS
CN Benzeneacetamide,
N-[1-[[[4-[[[(aminocarbonyl)amino]methyl]phenyl]methyl]amino]carbonyl]-4-[(aminoiminomethyl)amino]butyl]-.alpha.-phenoxy-.alpha.-phenyl-, (R)- (9CI) (CA INDEX NAME)

Absolute stereochemistry.

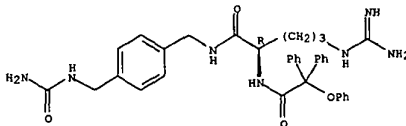


RN 191869-35-9 CAPLUS
CN Benzeneacetamide,
N-[1-[[[4-[[[(aminocarbonyl)amino]methyl]phenyl]methyl]amino]carbonyl]-4-[(aminoiminomethyl)amino]butyl]-.alpha.-phenoxy-.alpha.-phenyl-, (R)-, mono(trifluoroacetate) (9CI) (CA INDEX NAME)

CM 1

CRN 191869-34-8
CMF C35 H39 N7 O4

Absolute stereochemistry.



CM 2

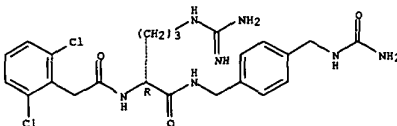
L21 ANSWER 10 OF 21 CAPLUS COPYRIGHT 2001 ACS (Continued)

CMF C2 H F3 O2



RN 191870-07-2 CAPLUS
CN Benzeneacetamide,
N-[1-[[[4-[[[(aminocarbonyl)amino]methyl]phenyl]methyl]amino]carbonyl]-4-[(aminoiminomethyl)amino]butyl]-2,6-dichloro-, (R)- (9CI) (CA INDEX NAME)

Absolute stereochemistry.

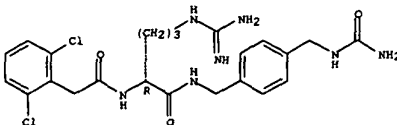


RN 191870-08-3 CAPLUS
CN Benzeneacetamide,
N-[1-[[[4-[[[(aminocarbonyl)amino]methyl]phenyl]methyl]amino]carbonyl]-4-[(aminoiminomethyl)amino]butyl]-2,6-dichloro-, (R)-, mono(trifluoroacetate) (9CI) (CA INDEX NAME)

CM 1

CRN 191870-07-2
CMF C23 H29 Cl2 N7 O3

Absolute stereochemistry.



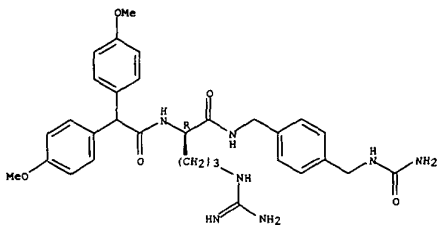
CM 2

CRN 76-05-1
CMF C2 H F3 O2



RN 191870-10-7 CAPLUS
 CN Benzeneacetamide,
 N-[1-[[[4-[[[(aminocarbonyl)amino]methyl]phenyl]methyl]amino]carbonyl]-4-[(aminoiminomethyl)amino]butyl]-4-methoxy-.alpha.-(4-methoxyphenyl)-, (R)- (9CI) (CA INDEX NAME)

Absolute stereochemistry.



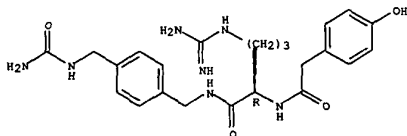
RN 191870-11-8 CAPLUS
 CN Benzeneacetamide,
 N-[1-[[[4-[[[(aminocarbonyl)amino]methyl]phenyl]methyl]amino]carbonyl]-4-[(aminoiminomethyl)amino]butyl]-4-methoxy-.alpha.-(4-methoxyphenyl)-, (R)-, monoacetate (9CI) (CA INDEX NAME)

CM 1

CRN 191870-10-7
 CMF C31 H39 N7 O5

Absolute stereochemistry.

Absolute stereochemistry.



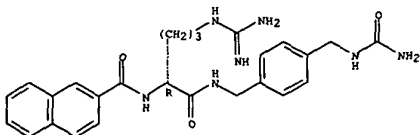
CM 2

CRN 64-19-7
 CMF C2 H4 O2



RN 191870-42-5 CAPLUS
 CN 2-Naphthalenecarboxamide,
 N-[1-[[[4-[[[(aminocarbonyl)amino]methyl]phenyl]methyl]amino]carbonyl]-4-[(aminoiminomethyl)amino]butyl)-, (R)- (9CI) (CA INDEX NAME)

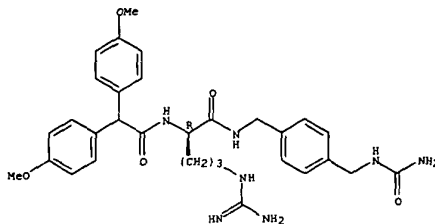
Absolute stereochemistry.



RN 191870-43-6 CAPLUS
 CN 2-Naphthalenecarboxamide,
 N-[1-[[[4-[[[(aminocarbonyl)amino]methyl]phenyl]methyl]amino]carbonyl]-4-[(aminoiminomethyl)amino]butyl)-, (R)-, monoacetate (9CI) (CA INDEX NAME)

CM 1

CRN 191870-42-5
 CMF C26 H31 N7 O3



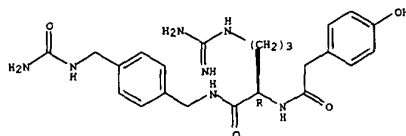
CM 2

CRN 64-19-7
 CMF C2 H4 O2



RN 191870-13-0 CAPLUS
 CN Benzeneacetamide,
 N-[1-[[[4-[[[(aminocarbonyl)amino]methyl]phenyl]methyl]amino]carbonyl]-4-[(aminoiminomethyl)amino]butyl]-4-hydroxy-, (R)- (9CI) (CA INDEX NAME)

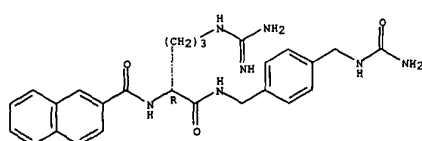
Absolute stereochemistry.



RN 191870-14-1 CAPLUS
 CN Benzeneacetamide,
 N-[1-[[[4-[[[(aminocarbonyl)amino]methyl]phenyl]methyl]amino]carbonyl]-4-[(aminoiminomethyl)amino]butyl]-4-hydroxy-, (R)-, monoacetate (salt) (9CI) (CA INDEX NAME)

CM 1

CRN 191870-13-0

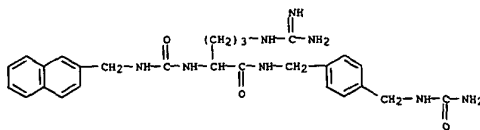


CM 2

CRN 64-19-7
 CMF C2 H4 O2

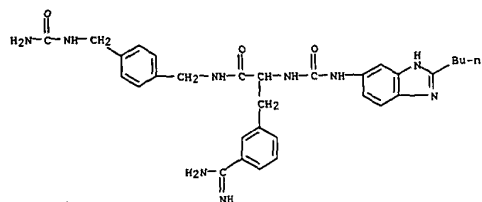


RN 191870-55-0 CAPLUS
 CN Pentanamide, N-[[4-[[[(aminocarbonyl)amino]methyl]phenyl]methyl]-5-[(aminoiminomethyl)amino]-2-[[[(2-naphthalenylmethyl)amino]carbonyl]amino]- (9CI) (CA INDEX NAME)

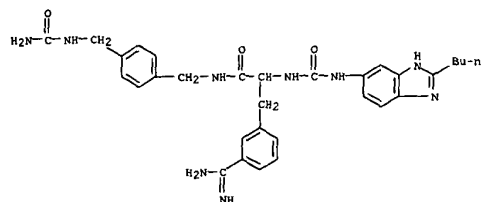


RN 191870-66-3 CAPLUS
 CN Benzenepropanamide, N-[[4-[[[(aminocarbonyl)amino]methyl]phenyl]methyl]-3-(aminoiminomethyl)-.alpha.-[[[(2-butyl-1H-benzimidazol-5-yl)amino]carbonyl]amino]- (9CI) (CA INDEX NAME)

L21 ANSWER 10 OF 21 CAPLUS COPYRIGHT 2001 ACS (Continued)



RN 191870-67-4 CAPLUS
CN Benzenepropionamide, N-[[4-[[[(aminocarbonyl)amino]methyl]phenyl]methyl]-3-(aminoiminomethyl)-alpha-[[[2-butyl-1H-benzimidazol-5-yl]amino]carbonyl]amino]-, monoacetate (9CI) (CA INDEX NAME)
CM 1
CRN 191870-66-3
CMF C31 H37 N9 O3



CM 2
CRN 64-19-7
CMF C2 H4 O2

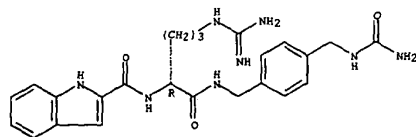


RN 191870-71-0 CAPLUS
CN Pentanamide, N-[[4-[[[(aminocarbonyl)amino]methyl]phenyl]methyl]-5-

L21 ANSWER 10 OF 21 CAPLUS COPYRIGHT 2001 ACS (Continued)

RN 191870-80-1 CAPLUS
CN 1H-Indole-2-carboxamide,
N-1-[[[4-[[[(aminocarbonyl)amino]methyl]phenyl]methyl]amino]carbonyl]-4-[[[aminoiminomethyl]amino]butyl]-, monohydrochloride, (R)- (9CI) (CA INDEX NAME)

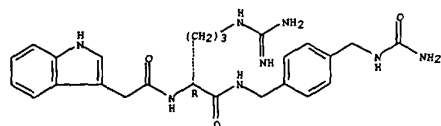
Absolute stereochemistry.



• HCl

RN 191870-82-3 CAPLUS
CN 1H-Indole-3-acetamide,
N-1-[[[4-[[[(aminocarbonyl)amino]methyl]phenyl]methyl]amino]carbonyl]-4-[[[aminoiminomethyl]amino]butyl]-, (R)- (9CI) (CA INDEX NAME)

Absolute stereochemistry.



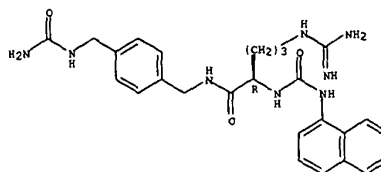
RN 191870-83-4 CAPLUS
CN 1H-Indole-3-acetamide,
N-1-[[[4-[[[(aminocarbonyl)amino]methyl]phenyl]methyl]amino]carbonyl]-4-[[[aminoiminomethyl]amino]butyl]-, (R)-, monoacetate (9CI) (CA INDEX NAME)

CM 1
CRN 191870-82-3
CMF C25 H32 N8 O3

Absolute stereochemistry.

L21 ANSWER 10 OF 21 CAPLUS COPYRIGHT 2001 ACS (Continued)
[[[aminoiminomethyl]amino]-2-[[[1-naphthalenylamino]carbonyl]amino]-, (R)- (9CI) (CA INDEX NAME)

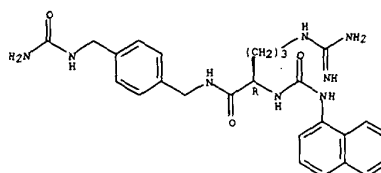
Absolute stereochemistry.



RN 191870-72-1 CAPLUS
CN Pentanamide, N-[[4-[[[(aminocarbonyl)amino]methyl]phenyl]methyl]-5-[[[aminoiminomethyl]amino]-2-[[[1-naphthalenylamino]carbonyl]amino]-, monoacetate (9CI) (CA INDEX NAME)

CM 1
CRN 191870-71-0
CMF C26 H32 N8 O3

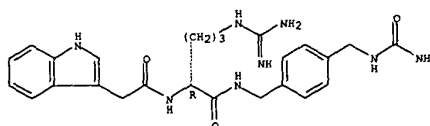
Absolute stereochemistry.



CM 2
CRN 64-19-7
CMF C2 H4 O2



L21 ANSWER 10 OF 21 CAPLUS COPYRIGHT 2001 ACS (Continued)

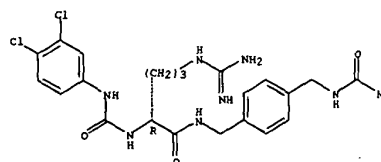


CM 2
CRN 64-19-7
CMF C2 H4 O2



RN 191870-85-6 CAPLUS
CN Pentanamide, N-[[4-[[[(aminocarbonyl)amino]methyl]phenyl]methyl]-5-[[[aminoiminomethyl]amino]-2-[[[3,4-dichlorophenyl]amino]carbonyl]amino]-, (R)- (9CI) (CA INDEX NAME)

Absolute stereochemistry.

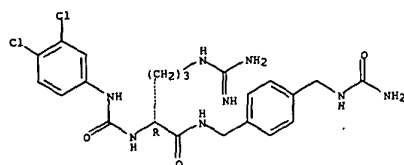


RN 191870-86-7 CAPLUS
CN Pentanamide, N-[[4-[[[(aminocarbonyl)amino]methyl]phenyl]methyl]-5-[[[aminoiminomethyl]amino]-2-[[[3,4-dichlorophenyl]amino]carbonyl]amino]-, (R)-, mono(trifluoroacetate) (9CI) (CA INDEX NAME)

CM 1
CRN 191870-85-6
CMF C22 H28 Cl2 N8 O3

Absolute stereochemistry.

L21 ANSWER 10 OF 21 CAPLUS COPYRIGHT 2001 ACS (Continued)

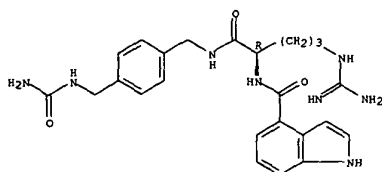


CM 2
CRN 76-05-1
CMF C2 H F3 O2



RN 191870-88-9 CAPLUS
CN 1H-Indole-4-carboxamide,
N-[1-[[[4-[[[aminocarbonyl]amino]methyl]phenyl]methyl]amino]carbonyl]-4-[(aminoiminomethyl)amino]butyl]-, (R)- (9CI) (CA INDEX NAME)

Absolute stereochemistry.



RN 191870-89-0 CAPLUS
CN 1H-Indole-4-carboxamide,
N-[1-[[[4-[[[aminocarbonyl]amino]methyl]phenyl]methyl]amino]carbonyl]-4-[(aminoiminomethyl)amino]butyl]-, (R)-, monoacetate (9CI) (CA INDEX NAME)

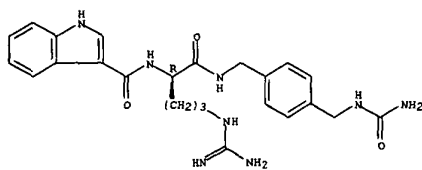
CM 1

L21 ANSWER 10 OF 21 CAPLUS COPYRIGHT 2001 ACS (Continued)

CM 1

CRN 191870-91-4
CMF C24 H30 N8 O3

Absolute stereochemistry.

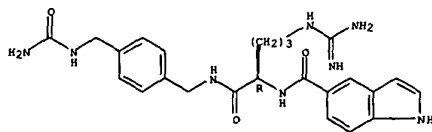


CM 2
CRN 64-19-7
CMF C2 H4 O2



RN 191870-94-7 CAPLUS
CN 1H-Indole-5-carboxamide,
N-[1-[[[4-[[[aminocarbonyl]amino]methyl]phenyl]methyl]amino]carbonyl]-4-[(aminoiminomethyl)amino]butyl]-, (R)- (9CI) (CA INDEX NAME)

Absolute stereochemistry.



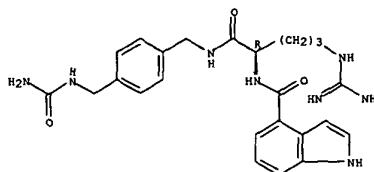
RN 191870-95-8 CAPLUS
CN 1H-Indole-5-carboxamide,
N-[1-[[[4-[[[aminocarbonyl]amino]methyl]phenyl]methyl]amino]carbonyl]-4-[(aminoiminomethyl)amino]butyl]-, (R)-, monoacetate (9CI) (CA INDEX NAME)

CM 1

L21 ANSWER 10 OF 21 CAPLUS COPYRIGHT 2001 ACS (Continued)

CRN 191870-88-9
CMF C24 H30 N8 O3

Absolute stereochemistry.

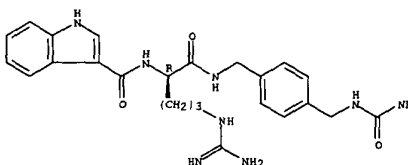


CM 2
CRN 64-19-7
CMF C2 H4 O2



RN 191870-91-4 CAPLUS
CN 1H-Indole-3-carboxamide,
N-[1-[[[4-[[[aminocarbonyl]amino]methyl]phenyl]methyl]amino]carbonyl]-4-[(aminoiminomethyl)amino]butyl]-, (R)- (9CI) (CA INDEX NAME)

Absolute stereochemistry.

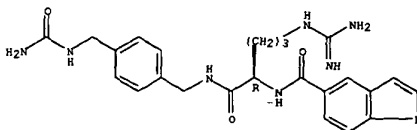


RN 191870-92-5 CAPLUS
CN 1H-Indole-3-carboxamide,
N-[1-[[[4-[[[aminocarbonyl]amino]methyl]phenyl]methyl]amino]carbonyl]-4-[(aminoiminomethyl)amino]butyl]-, (R)-, monoacetate (9CI) (CA INDEX NAME)

L21 ANSWER 10 OF 21 CAPLUS COPYRIGHT 2001 ACS (Continued)

CRN 191870-94-7
CMF C24 H30 N8 O3

Absolute stereochemistry.

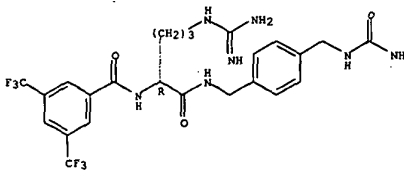


CM 2
CRN 64-19-7
CMF C2 H4 O2



RN 191870-97-0 CAPLUS
CN Benzamide,
N-[1-[[[4-[[[aminocarbonyl]amino]methyl]phenyl]methyl]amino]carbonyl]-4-[(aminoiminomethyl)amino]butyl]-3,5-bis(trifluoromethyl)-, (R)- (9CI) (CA INDEX NAME)

Absolute stereochemistry.

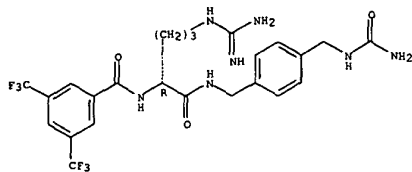


RN 191870-98-1 CAPLUS
CN Benzamide,
N-[1-[[[4-[[[aminocarbonyl]amino]methyl]phenyl]methyl]amino]carbonyl]-4-[(aminoiminomethyl)amino]butyl]-3,5-bis(trifluoromethyl)-, (R)-, monoacetate (9CI) (CA INDEX NAME)

L21 ANSWER 10 OF 21 CAPLUS COPYRIGHT 2001 ACS (Continued)
CM 1

CRN 191870-97-0
CMF C24 H27 F6 N7 O3

Absolute stereochemistry.



CM 2

CRN 64-19-7
CMF C2 H4 O2

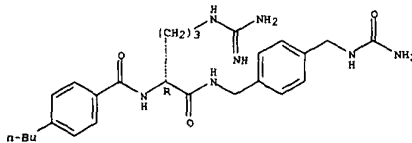


RN 191871-00-8 CAPLUS

CN Benzamide,

N-[1-[[[4-[[[aminocarbonyl]amino]methyl]phenyl]methyl]amino]carbonyl]-4-[[aminoiminomethyl]amino]butyl]-4-butyl-, (R)- (9CI) (CA INDEX NAME)]

Absolute stereochemistry.



RN 191871-01-9 CAPLUS

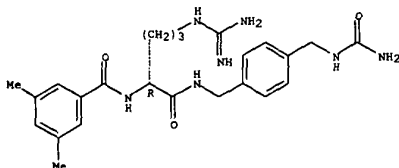
CN Benzamide,

N-[1-[[[4-[[[aminocarbonyl]amino]methyl]phenyl]methyl]amino]carbonyl]-4-[[aminoiminomethyl]amino]butyl]-4-butyl-, (R)-, monoacetate (9CI) (CA INDEX NAME)]

L21 ANSWER 10 OF 21 CAPLUS COPYRIGHT 2001 ACS (Continued)
CM 1

CRN 191871-03-1
CMF C24 H33 N7 O3

Absolute stereochemistry.



CM 2

CRN 64-19-7
CMF C2 H4 O2

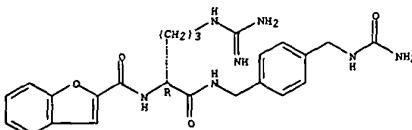


RN 191871-06-4 CAPLUS

CN 2-Benzofuran-2-carboxamide,

N-[1-[[[4-[[[aminocarbonyl]amino]methyl]phenyl]methyl]amino]carbonyl]-4-[[aminoiminomethyl]amino]butyl]-, (R)- (9CI) (CA INDEX NAME)]

Absolute stereochemistry.



RN 191871-07-5 CAPLUS

CN 2-Benzofuran-2-carboxamide,

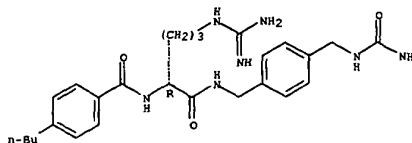
N-[1-[[[4-[[[aminocarbonyl]amino]methyl]phenyl]methyl]amino]carbonyl]-4-[[aminoiminomethyl]amino]butyl]-, (R)-, monoacetate (9CI) (CA INDEX NAME)]

CM 1

L21 ANSWER 10 OF 21 CAPLUS COPYRIGHT 2001 ACS (Continued)
CM 1

CRN 191871-00-8
CMF C26 H37 N7 O3

Absolute stereochemistry.



CM 2

CRN 64-19-7
CMF C2 H4 O2

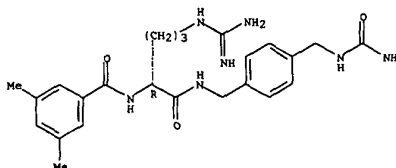


RN 191871-03-1 CAPLUS

CN Benzamide,

N-[1-[[[4-[[[aminocarbonyl]amino]methyl]phenyl]methyl]amino]carbonyl]-4-[[aminoiminomethyl]amino]butyl]-3,5-dimethyl-, (R)- (9CI) (CA INDEX NAME)]

Absolute stereochemistry.



RN 191871-04-2 CAPLUS

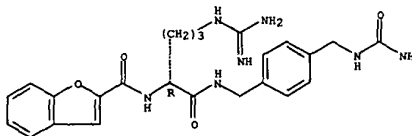
CN Benzamide,

N-[1-[[[4-[[[aminocarbonyl]amino]methyl]phenyl]methyl]amino]carbonyl]-4-[[aminoiminomethyl]amino]butyl]-3,5-dimethyl-, (R)-, monoacetate (9CI) (CA INDEX NAME)]

L21 ANSWER 10 OF 21 CAPLUS COPYRIGHT 2001 ACS (Continued)

CRN 191871-06-4
CMF C24 H29 N7 O4

Absolute stereochemistry.



CM 2

CRN 64-19-7
CMF C2 H4 O2

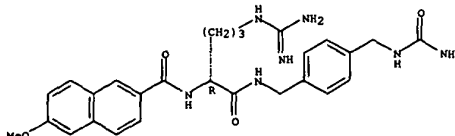


RN 191871-09-7 CAPLUS

CN 2-Naphthalenecarboxamide,

N-[1-[[[4-[[[aminocarbonyl]amino]methyl]phenyl]methyl]amino]carbonyl]-4-[[aminoiminomethyl]amino]butyl]-6-methoxy-, (R)- (9CI) (CA INDEX NAME)]

Absolute stereochemistry.



RN 191871-10-0 CAPLUS

CN 2-Naphthalenecarboxamide,

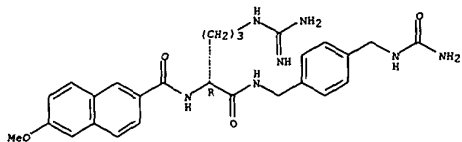
N-[1-[[[4-[[[aminocarbonyl]amino]methyl]phenyl]methyl]amino]carbonyl]-4-[[aminoiminomethyl]amino]butyl]-6-methoxy-, (R)-, monoacetate (9CI) (CA INDEX NAME)]

CM 1

CRN 191871-09-7

L21 ANSWER 10 OF 21 CAPLUS COPYRIGHT 2001 ACS (Continued)
CNF C27 H33 N7 O4

Absolute stereochemistry.



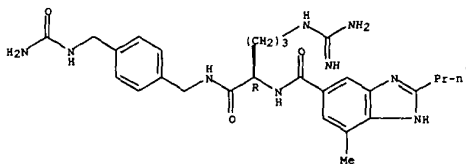
CM 2

CRN 64-19-7
CMF C2 H4 O2



RN 191871-12-2 CAPLUS
CN 1H-Benzimidazole-5-carboxamide,
N-1-[[[4-[[[amino]methyl]phenyl]amino]methyl]phenyl]methyl]amino]carbonyl]-4-[(aminoiminomethyl)amino]butyl]-7-methyl-2-propyl-, (R)-, diacetate (9CI) (CA INDEX NAME)

Absolute stereochemistry.



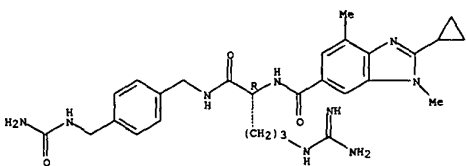
RN 191871-13-3 CAPLUS
CN 1H-Benzimidazole-5-carboxamide,
N-1-[[[4-[[[amino]methyl]phenyl]amino]methyl]phenyl]methyl]amino]carbonyl]-4-[(aminoiminomethyl)amino]butyl]-7-methyl-2-propyl-, (R)-, diacetate (9CI) (CA INDEX NAME)

CM 1

L21 ANSWER 10 OF 21 CAPLUS COPYRIGHT 2001 ACS (Continued)

CRN 191871-16-6
CMF C28 H37 N9 O3

Absolute stereochemistry.

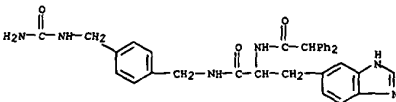


CM 2

CRN 64-19-7
CMF C2 H4 O2



RN 191871-31-5 CAPLUS
CN 1H-Benzimidazole-5-propanamide,
N-[[4-[[[amino]methyl]phenyl]amino]methyl]phenyl]methyl]-.alpha.-(diphenylacetyl)amino-, monohydrochloride (9CI) (CA INDEX NAME)



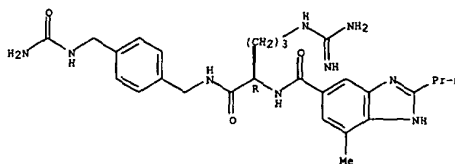
• HCl

RN 191871-47-3 CAPLUS
CN 1H-Indole-1-acetic acid,
3-[2-[[1-[[[4-[[[amino]methyl]phenyl]amino]methyl]phenyl]methyl]amino]carbonyl]-4-[(aminoiminomethyl)amino]butyl]amino]-2-oxoethyl]-, ethyl ester, (R)- (9CI) (CA INDEX NAME)

Absolute stereochemistry.

L21 ANSWER 10 OF 21 CAPLUS COPYRIGHT 2001 ACS (Continued)
CRN 191871-12-2
CMF C27 H37 N9 O3

Absolute stereochemistry.



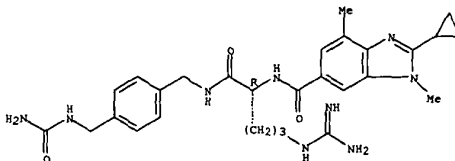
CM 2

CRN 64-19-7
CMF C2 H4 O2



RN 191871-16-6 CAPLUS
CN 1H-Benzimidazole-6-carboxamide,
N-1-[[[4-[[[amino]methyl]phenyl]amino]methyl]phenyl]methyl]amino]carbonyl]-4-[(aminoiminomethyl)amino]butyl]-2-cyclopropyl-1,4-dimethyl-, (R)- (9CI) (CA INDEX NAME)

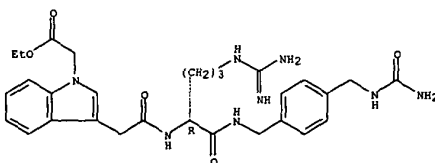
Absolute stereochemistry.



RN 191871-17-7 CAPLUS
CN 1H-Benzimidazole-6-carboxamide,
N-1-[[[4-[[[amino]methyl]phenyl]amino]methyl]phenyl]methyl]amino]carbonyl]-4-[(aminoiminomethyl)amino]butyl]-2-cyclopropyl-1,4-dimethyl-, (R)-, monoacetate (9CI) (CA INDEX NAME)

CM 1

L21 ANSWER 10 OF 21 CAPLUS COPYRIGHT 2001 ACS (Continued)

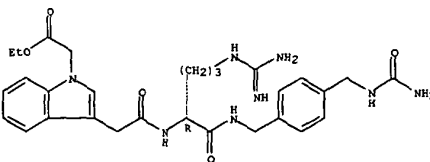


RN 191871-48-4 CAPLUS
CN 1H-Indole-3-acetic acid,
3-[2-[[1-[[[4-[[[amino]methyl]phenyl]amino]methyl]phenyl]methyl]amino]carbonyl]-4-[(aminoiminomethyl)amino]butyl]amino]-2-oxoethyl]-, ethyl ester, (R)-, monoacetate (9CI) (CA INDEX NAME)

CM 1

CRN 191871-47-3
CMF C29 H38 N8 O5

Absolute stereochemistry.



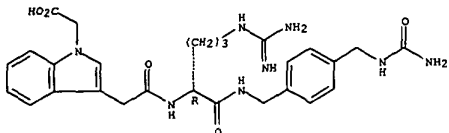
CM 2

CRN 64-19-7
CMF C2 H4 O2



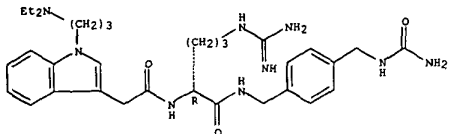
RN 191871-49-5 CAPLUS
CN 1H-Indole-1-acetic acid,
3-[2-[[1-[[[4-[[[amino]methyl]phenyl]amino]methyl]phenyl]methyl]amino]carbonyl]-4-[(aminoiminomethyl)amino]butyl]amino]-2-oxoethyl]-, (R)- (9CI) (CA INDEX NAME)

L21 ANSWER 10 OF 21 CAPLUS COPYRIGHT 2001 ACS (Continued)
Absolute stereochemistry.



RN 191871-53-1 CAPLUS
CN 1H-Indole-3-acetamide,
N-1-[[[4-[[[(aminocarbonyl)amino]methyl]phenyl]methyl]amino]carbonyl]-4-[[[aminoiminomethyl]amino]butyl]-1-[3-(diethylamino)propyl]-, (R)-, (9CI) (CA INDEX NAME)

Absolute stereochemistry.

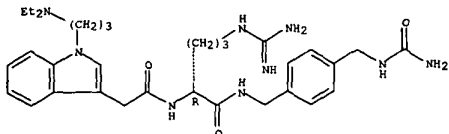


RN 191871-54-2 CAPLUS
CN 1H-Indole-3-acetamide,
N-1-[[[4-[[[(aminocarbonyl)amino]methyl]phenyl]methyl]amino]carbonyl]-4-[[[aminoiminomethyl]amino]butyl]-1-[3-(diethylamino)propyl]-, (R)-, monoacetate (9CI) (CA INDEX NAME)

CM 1

CRN 191871-53-1
CMF C32 H47 N9 O3

Absolute stereochemistry.

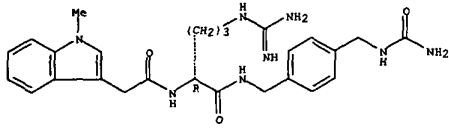


L21 ANSWER 10 OF 21 CAPLUS COPYRIGHT 2001 ACS (Continued)

$\text{O}=\text{C}-\text{OH}$

RN 191871-66-6 CAPLUS
CN 1H-Indole-3-acetamide,
N-1-[[[4-[[[(aminocarbonyl)amino]methyl]phenyl]methyl]amino]carbonyl]-4-[[[aminoiminomethyl]amino]butyl]-1-methyl-, (R)-, (9CI) (CA INDEX NAME)

Absolute stereochemistry.

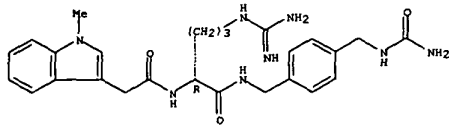


RN 191871-67-7 CAPLUS
CN 1H-Indole-3-acetamide,
N-1-[[[4-[[[(aminocarbonyl)amino]methyl]phenyl]methyl]amino]carbonyl]-4-[[[aminoiminomethyl]amino]butyl]-1-methyl-, (R)-, monoacetate (9CI) (CA INDEX NAME)

CM 1

CRN 191871-66-6
CMF C26 H34 N8 O3

Absolute stereochemistry.



CM 2

CRN 64-19-7
CMF C2 H4 O2



L21 ANSWER 10 OF 21 CAPLUS COPYRIGHT 2001 ACS (Continued)

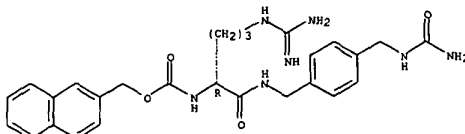
CM 2

CRN 64-19-7
CMF C2 H4 O2



RN 191871-63-3 CAPLUS
CN Carbanic acid,
[1-[[[4-[[[(aminocarbonyl)amino]methyl]phenyl]methyl]amino]carbonyl]-4-[[[aminoiminomethyl]amino]butyl]-, 2-naphthalenylmethyl ester, (R)- (9CI) (CA INDEX NAME)

Absolute stereochemistry.

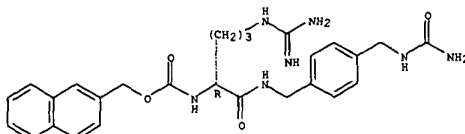


RN 191871-64-4 CAPLUS
CN Formic acid, compd. with (R)-2-naphthalenylmethyl [1-[[[4-[[[(aminocarbonyl)amino]methyl]phenyl]methyl]amino]carbonyl]-4-[[[aminoiminomethyl]amino]butyl]carbamate (1:1) (9CI) (CA INDEX NAME)

CM 1

CRN 191871-63-3
CMF C27 H33 N7 O4

Absolute stereochemistry.



CM 2

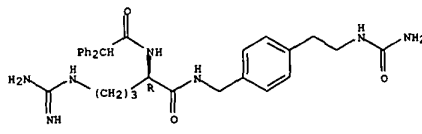
CRN 64-18-6
CMF C H2 O2

L21 ANSWER 10 OF 21 CAPLUS COPYRIGHT 2001 ACS (Continued)

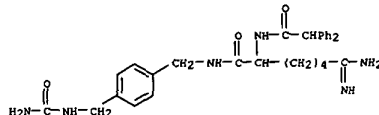
RN 191871-80-4 CAPLUS

CN Benzeneacetamide,
N-1-[[[4-[[[(aminocarbonyl)amino]ethyl]phenyl]methyl]amino]carbonyl]-4-[[[aminoiminomethyl]amino]butyl]-.alpha.-phenyl-, (R)-, (9CI) (CA INDEX NAME)

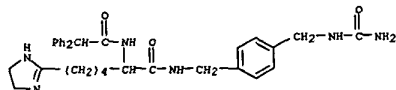
Absolute stereochemistry.



RN 191871-86-0 CAPLUS
CN Benzeneacetamide,
N-16-amino-1-[[[4-[[[(aminocarbonyl)amino]methyl]phenyl]methyl]amino]carbonyl]-6-iminoethyl]-.alpha.-phenyl- (9CI) (CA INDEX NAME)



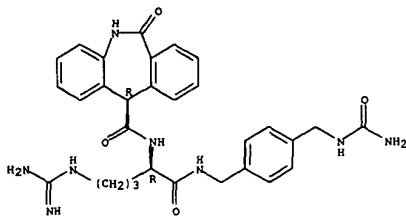
RN 191871-88-2 CAPLUS
CN 1H-Imidazole-2-hexanamide,
N-[[4-[[[(aminocarbonyl)amino]methyl]phenyl]methyl]amino]-.alpha.-[[[diphenylacetyl]amino]-4,5-dihydro- (9CI) (CA INDEX NAME)



RN 191872-02-3 CAPLUS
CN 5H-Dibenz[b,e]azepine-11-carboxamide, N-1-[[[4-[[[(aminocarbonyl)amino]methyl]phenyl]methyl]amino]carbonyl]-4-[[[aminoiminomethyl]amino]butyl]-6,11-dihydro-6-oxo-, [R-(R*,R*)]- (9CI) (CA INDEX NAME)

Absolute stereochemistry.

L21 ANSWER 10 OF 21 CAPLUS COPYRIGHT 2001 ACS (Continued)

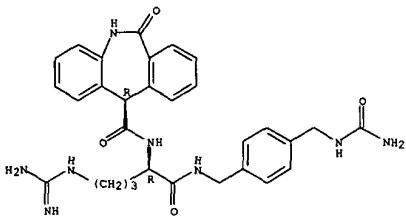


RN 191872-03-4 CAPLUS
CN 5H-Dibenz[b,e]azepine-11-carboxamide, N-[1-[[[4-[[[aminocarbonyl]amino]methyl]phenyl]methyl]amino]carbonyl]-4-[[[aminoiminomethyl]amino]butyl]-6,11-dihydro-6-oxo-, [R-(R*,S*)]-, monoacetate (9CI) (CA INDEX NAME)

CM 1

CRN 191872-02-3
CMF C30 H34 N8 O4

Absolute stereochemistry.



CM 2

CRN 64-19-7
CMF C2 H4 O2



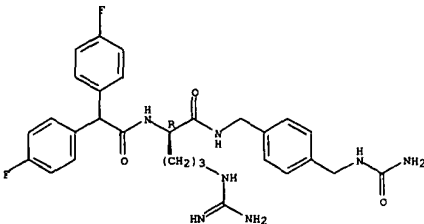
L21 ANSWER 10 OF 21 CAPLUS COPYRIGHT 2001 ACS (Continued)

CRN 64-19-7
CMF C2 H4 O2



RN 191872-07-8 CAPLUS
CN Benzeneacetamide,
N-[1-[[[4-[[[aminocarbonyl]amino]methyl]phenyl]methyl]amino]carbonyl]-4-[[[aminoiminomethyl]amino]butyl]-4-fluoro-.alpha.-(4-fluorophenyl)-, (R)- (9CI) (CA INDEX NAME)

Absolute stereochemistry.



RN 191872-08-9 CAPLUS
CN Benzeneacetamide,
N-[1-[[[4-[[[aminocarbonyl]amino]methyl]phenyl]methyl]amino]carbonyl]-4-[[[aminoiminomethyl]amino]butyl]-4-fluoro-.alpha.-(4-fluorophenyl)-, (R)-, mono(trifluoroacetate) (9CI) (CA INDEX NAME)

CM 1

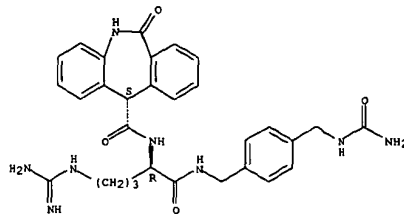
CRN 191872-07-8
CMF C29 H33 F2 N7 O3

Absolute stereochemistry.

L21 ANSWER 10 OF 21 CAPLUS COPYRIGHT 2001 ACS (Continued)

RN 191872-04-5 CAPLUS
CN 5H-Dibenz[b,e]azepine-11-carboxamide, N-[1-[[[4-[[[aminocarbonyl]amino]methyl]phenyl]methyl]amino]carbonyl]-4-[[[aminoiminomethyl]amino]butyl]-6,11-dihydro-6-oxo-, [R-(R*,S*)]- (9CI) (CA INDEX NAME)

Absolute stereochemistry.

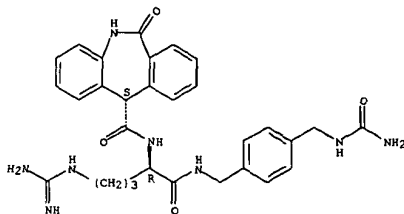


RN 191872-05-6 CAPLUS
CN 5H-Dibenz[b,e]azepine-11-carboxamide, N-[1-[[[4-[[[aminocarbonyl]amino]methyl]phenyl]methyl]amino]carbonyl]-4-[[[aminoiminomethyl]amino]butyl]-6,11-dihydro-6-oxo-, [R-(R*,S*)]-, monoacetate (9CI) (CA INDEX NAME)

CM 1

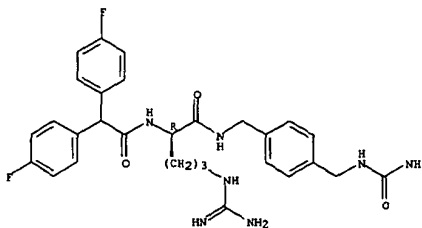
CRN 191872-04-5
CMF C30 H34 N8 O4

Absolute stereochemistry.



CM 2

L21 ANSWER 10 OF 21 CAPLUS COPYRIGHT 2001 ACS (Continued)



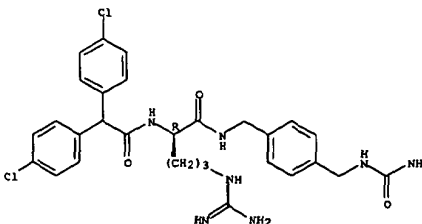
CM 2

CRN 76-05-1
CMF C2 H F3 O2



RN 191872-10-3 CAPLUS
CN Benzeneacetamide,
N-[1-[[[4-[[[aminocarbonyl]amino]methyl]phenyl]methyl]amino]carbonyl]-4-[[[aminoiminomethyl]amino]butyl]-4-chloro-.alpha.-(4-chlorophenyl)-, (R)- (9CI) (CA INDEX NAME)

Absolute stereochemistry.



RN 191872-11-4 CAPLUS

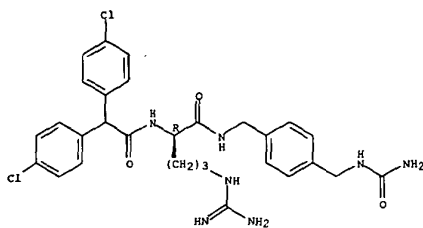
L21 ANSWER 10 OF 21 CAPLUS COPYRIGHT 2001 ACS (Continued)

CN Benzeneacetamide,
N-[1-[[[4-[[[(aminocarbonyl)amino]methyl]phenyl]methyl]amino]carbonyl]-4-[(aminoiminomethyl)amino]butyl]-4-chloro-.alpha.-(4-chlorophenyl)-, (R)-, mono(trifluoroacetate) (9CI) (CA INDEX NAME)

CM 1

CRN 191872-10-3
CMF C29 H33 Cl2 N7 O3

Absolute stereochemistry.



CM 2

CRN 76-05-1
CMF C2 H F3 O2

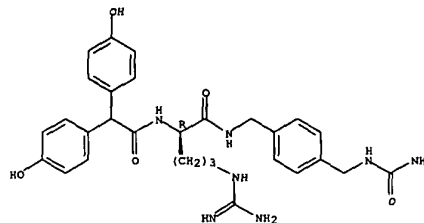


RN 191872-26-1 CAPLUS

CN Benzeneacetamide,
N-[1-[[[4-[[[(aminocarbonyl)amino]methyl]phenyl]methyl]amino]carbonyl]-4-[(aminoiminomethyl)amino]butyl]-4-hydroxy-.alpha.-(4-hydroxyphenyl)-, (R)- (9CI) (CA INDEX NAME)

Absolute stereochemistry.

L21 ANSWER 10 OF 21 CAPLUS COPYRIGHT 2001 ACS (Continued)



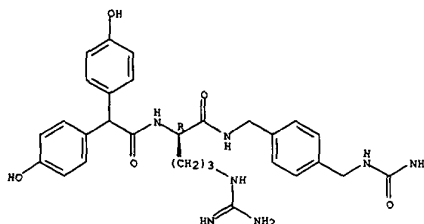
RN 191872-27-2 CAPLUS

CN Benzeneacetamide,
N-[1-[[[4-[[[(aminocarbonyl)amino]methyl]phenyl]methyl]amino]carbonyl]-4-[(aminoiminomethyl)amino]butyl]-4-hydroxy-.alpha.-(4-hydroxyphenyl)-, (R)-, mono(trifluoroacetate) (salt) (9CI) (CA INDEX NAME)

CM 1

CRN 191872-26-1
CMF C29 H35 N7 O5

Absolute stereochemistry.



CM 2

CRN 76-05-1
CMF C2 H F3 O2

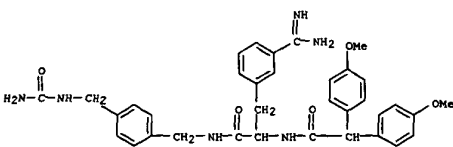
L21 ANSWER 10 OF 21 CAPLUS COPYRIGHT 2001 ACS (Continued)



RN 191872-38-5 CAPLUS

CN Benzenepropanamide, N-[[4-[[[(aminocarbonyl)amino]methyl]phenyl]methyl]-3-(aminoiminomethyl)-.alpha.-[bis(4-methoxyphenyl)acetyl]amino]- (9CI)

(CA INDEX NAME)

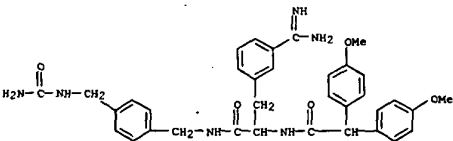


RN 191872-39-6 CAPLUS

CN Benzenepropanamide, N-[[4-[[[(aminocarbonyl)amino]methyl]phenyl]methyl]-3-(aminoiminomethyl)-.alpha.-[bis(4-methoxyphenyl)acetyl]amino]-, monoacetate (9CI) (CA INDEX NAME)

CM 1

CRN 191872-38-5
CMF C35 H38 N6 O5



CM 2

CRN 64-19-7
CMF C2 H4 O2

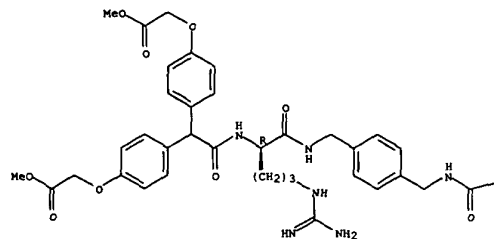
L21 ANSWER 10 OF 21 CAPLUS COPYRIGHT 2001 ACS (Continued)



RN 191872-49-8 CAPLUS

CN Acetic acid,
2,2'-[[2-[[1-[[[4-[[[(aminocarbonyl)amino]methyl]phenyl]methyl]amino]carbonyl]-4-[(aminoiminomethyl)amino]butyl]amino]-2-oxoethylidene]bis(4,1-phenyleneoxy)]bis-, dimethyl ester, (R)- (9CI) (CA INDEX NAME)

Absolute stereochemistry.



PAGE 1-A

-NH2

RN 191872-50-1 CAPLUS

CN Acetic acid,
2,2'-[[2-[[1-[[[4-[[[(aminocarbonyl)amino]methyl]phenyl]methyl]amino]carbonyl]-4-[(aminoiminomethyl)amino]butyl]amino]-2-

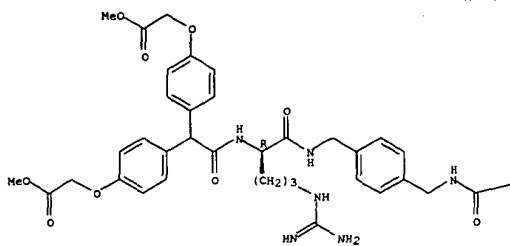
PAGE 1-B

L21 ANSWER 10 OF 21 CAPLUS COPYRIGHT 2001 ACS (Continued)
oxoethylidene]bis(4,1-phenyleneoxy)]bis-, dimethyl ester, (R)-,
monoacetate (9CI) (CA INDEX NAME)

CM 1

CRN 191872-49-8
CMF C35 H43 N7 O9

Absolute stereochemistry.



PAGE 1-A

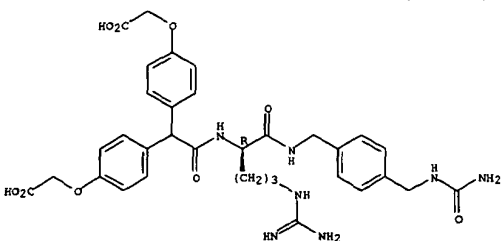
PAGE 1-B

NH₂

CM 2

CRN 64-19-7
CMF C2 H4 O2

L21 ANSWER 10 OF 21 CAPLUS COPYRIGHT 2001 ACS (Continued)



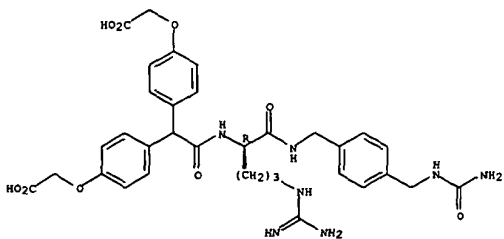
RN 191872-56-7 CAPLUS

CM Acetic acid,
2,2'-[[2-[[1-[[[4-[[[aminocarbonyl]amino]methyl]phenyl]methyl
1]amino]carbonyl]-4-[[aminoiminomethyl]amino]butyl]amino]-2-
oxoethylidene]bis(4,1-phenyleneoxy)]bis-, (R)-, monoacetate (9CI) (CA
INDEX NAME)

CM 1

CRN 191872-55-6
CMF C33 H39 N7 O9

Absolute stereochemistry.



CM 2

CRN 64-19-7
CMF C2 H4 O2

L21 ANSWER 10 OF 21 CAPLUS COPYRIGHT 2001 ACS (Continued)

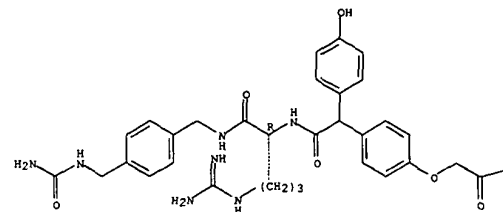


RN 191872-52-3 CAPLUS

CM Acetic acid,
[4-[[2-[[1-[[[4-[[[aminocarbonyl]amino]methyl]phenyl]methyl]a

mino]carbonyl]-4-[[aminoiminomethyl]amino]butyl]amino]-1-(4-hydroxyphenyl)-
2-oxoethyl]phenoxy]-, methyl ester, (1R)- (9CI) (CA INDEX NAME)

Absolute stereochemistry.



PAGE 1-A

PAGE 1-B

OMe

RN 191872-55-6 CAPLUS

CM Acetic acid,
2,2'-[[2-[[1-[[[4-[[[aminocarbonyl]amino]methyl]phenyl]methyl
1]amino]carbonyl]-4-[[aminoiminomethyl]amino]butyl]amino]-2-
oxoethylidene]bis(4,1-phenyleneoxy)]bis-, (R)- (9CI) (CA INDEX NAME)

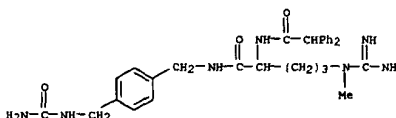
Absolute stereochemistry.

L21 ANSWER 10 OF 21 CAPLUS COPYRIGHT 2001 ACS (Continued)



RN 191872-61-4 CAPLUS

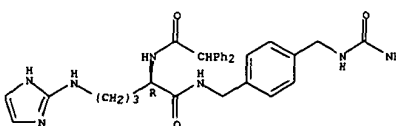
CM Benzeneacetamide,
N-[1-[[[4-[[[aminocarbonyl]amino]methyl]phenyl]methyl]a
mino]carbonyl]-4-[[aminoiminomethyl]methylamino]butyl]-.alpha.-phenyl-
(9CI) (CA INDEX NAME)



RN 191872-62-5 CAPLUS

CM Benzeneacetamide,
N-[1-[[[4-[[[aminocarbonyl]amino]methyl]phenyl]methyl]a
mino]carbonyl]-4-(1H-imidazol-2-ylamino)butyl]-.alpha.-phenyl-, (R)-
(9CI) (CA INDEX NAME)

Absolute stereochemistry.

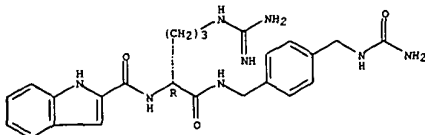


RN 191872-68-1 CAPLUS

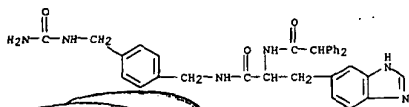
CM 1H-Indole-2-carboxamide,
N-[1-[[[4-[[[aminocarbonyl]amino]methyl]phenyl]methyl]a
mino]carbonyl]-4-[[aminoiminomethyl]amino]butyl]-, (R)- (9CI) (CA
INDEX NAME)

Absolute stereochemistry.

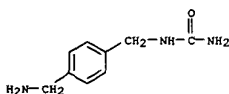
L21 ANSWER 10 OF 21 CAPLUS COPYRIGHT 2001 ACS (Continued)



RN 191872-69-2 CAPLUS
 CN 1H-Benzimidazole-5-propanamide,
 N-[[4-[[[4-[[[amino]methyl]phenyl]methyl]amino]butyl]-.alpha.-phenyl-
]methyl]-.alpha.-[[diphenylacetyl]amino]- (9CI) (CA INDEX NAME)

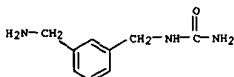


IT 191868-11-8
 RL: RCT (Reaction)
 (prepn. of amino acid derivs. as neuropeptide Y antagonists)
 RN 191868-11-8 CAPLUS
 CN Urea, [[4-(aminomethyl)phenyl]methyl]- (9CI) (CA INDEX NAME)



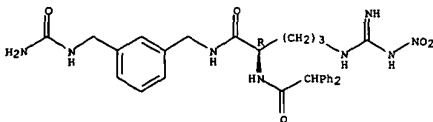
IT 191854-64-5P 191855-71-7P 191868-28-7P
 191868-29-8P 191868-32-3P 191868-33-4P
 191868-48-1P 191868-49-2P 191868-52-7P
 191868-67-4P 191868-68-5P 191868-69-6P
 191868-72-1P 191868-75-4P 191868-78-7P
 191868-92-5P 191868-93-6P 191868-94-7P
 191868-98-1P 191869-01-9P 191869-05-3P
 191869-09-7P 191869-12-2P 191869-33-7P
 191870-03-8P 191870-06-1P 191870-09-4P
 191870-12-9P 191870-30-1P 191870-41-4P
 191870-52-7P 191870-54-9P 191870-64-1P
 191870-65-2P 191870-66-5P 191870-69-6P
 191870-70-9P 191870-79-8P 191870-81-2P
 191870-84-5P 191870-87-8P 191870-90-3P
 191870-93-6P 191870-96-9P 191870-99-2P

L21 ANSWER 10 OF 21 CAPLUS COPYRIGHT 2001 ACS (Continued)

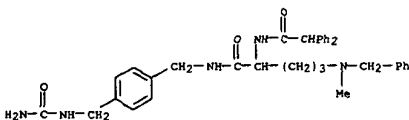


RN 191868-29-8 CAPLUS
 CN Benzeneacetamide,
 N-[1-[[[3-[[[amino]methyl]phenyl]methyl]amino]butyl]-4-[[imino(nitroamino)methyl]amino]butyl]-.alpha.-phenyl-
]methyl]-.alpha.-phenyl- (R)- (9CI) (CA INDEX NAME)

Absolute stereochemistry.



RN 191868-32-3 CAPLUS
 CN Benzeneacetamide,
 N-[1-[[[4-[[[amino]methyl]phenyl]methyl]amino]butyl]-4-[[methyl(phenylmethyl)amino]butyl]-.alpha.-phenyl-
]methyl]-.alpha.-phenyl- (9CI) (CA INDEX NAME)



RN 191868-33-4 CAPLUS
 CN Benzeneacetamide,
 N-[1-[[[4-[[[amino]methyl]phenyl]methyl]amino]butyl]-4-[[methylamino]butyl]-.alpha.-phenyl-
]methyl]-.alpha.-phenyl- (9CI) (CA INDEX NAME)

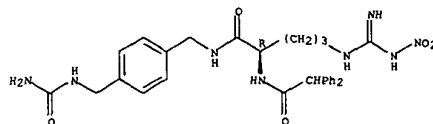
L21 ANSWER 10 OF 21 CAPLUS COPYRIGHT 2001 ACS (Continued)

191871-02-0P 191871-05-3P 191871-08-6P
 191871-11-1P 191871-15-5P 191871-29-1P
 191871-30-4P 191871-46-2P 191871-52-0P
 191871-62-2P 191871-65-5P 191871-76-8P
 191871-78-0P 191871-79-1P 191871-85-9P
 191871-93-9P 191872-00-1P 191872-01-2P
 191872-06-7P 191872-09-0P 191872-25-0P
 191872-33-0P 191872-35-2P 191872-36-3P
 191872-37-4P 191872-46-5P 191872-47-6P
 191872-48-7P 191872-51-2P 191872-53-4P
 191872-54-5P

RL: RCT (Reactant); SPN (Synthetic preparation); PREP (Preparation)
 (prepn. of amino acid derivs. as neuropeptide Y antagonists)

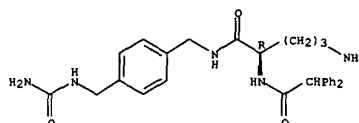
RN 191854-64-5 CAPLUS
 CN Benzeneacetamide,
 N-[1-[[[4-[[[amino]methyl]phenyl]methyl]amino]butyl]-4-[[imino(nitroamino)methyl]amino]butyl]-.alpha.-phenyl-
]methyl]-.alpha.-phenyl- (R)- (9CI) (CA INDEX NAME)

Absolute stereochemistry.



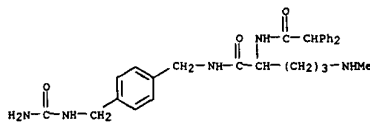
RN 191855-71-7 CAPLUS
 CN Benzeneacetamide,
 N-[[4-amino-1-[[[4-[[[amino]methyl]phenyl]methyl]amino]butyl]-.alpha.-phenyl-
]methyl]amino]butyl]-.alpha.-phenyl-, (R)- (9CI) (CA INDEX NAME)

Absolute stereochemistry.

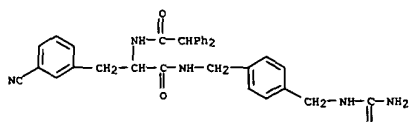


RN 191868-28-7 CAPLUS
 CN Urea, [[3-(aminomethyl)phenyl]methyl]- (9CI) (CA INDEX NAME)

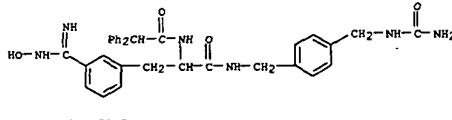
L21 ANSWER 10 OF 21 CAPLUS COPYRIGHT 2001 ACS (Continued)



RN 191868-48-1 CAPLUS
 CN Benzeneacetamide, N-[[4-[[[amino]methyl]phenyl]methyl]-3-
 cyano-.alpha.-[[diphenylacetyl]amino]- (9CI) (CA INDEX NAME)



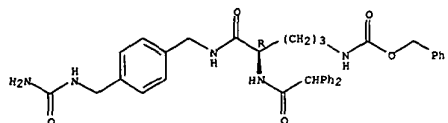
RN 191868-49-2 CAPLUS
 CN Benzeneacetamide, N-[[4-[[[amino]methyl]phenyl]methyl]-
 .alpha.-[[diphenylacetyl]amino]-3-[[hydroxyamino]imino]methyl]- (9CI) (CA INDEX NAME)



RN 191868-52-7 CAPLUS
 CN Carbamic acid,
 [5-[[[4-[[[amino]methyl]phenyl]methyl]amino]-
 4-[[diphenylacetyl]amino]-5-oxopentyl]-, phenylmethyl ester, (R)- (9CI) (CA INDEX NAME)

Absolute stereochemistry.

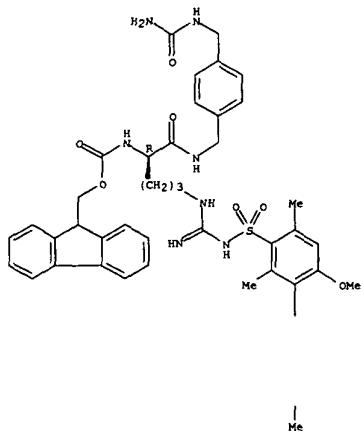
L21 ANSWER 10 OF 21 CAPLUS COPYRIGHT 2001 ACS (Continued)



RN 191868-67-4 CAPLUS
CN Carbamic acid,
[1-[[[4-[[[aminocarbonyl]amino]methyl]phenyl]methyl]amino]carbonyl]-4-[[imino[[4-methoxy-2,3,6-trimethylphenyl]sulfonyl]amino]methyl]amino]butyl]-, 9H-fluoren-9-ylmethyl ester, (R)- (9CI) (CA INDEX NAME)

Absolute stereochemistry.

PAGE 1-A



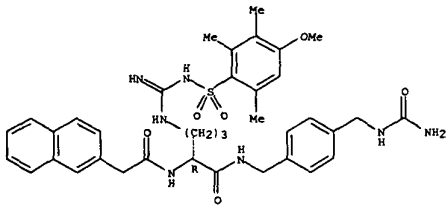
PAGE 2-A

RN 191868-68-5 CAPLUS
CN Pentanamide,
2-amino-N-[[4-[[[aminocarbonyl]amino]methyl]phenyl]methyl]-5-[[imino[[4-methoxy-2,3,6-trimethylphenyl]sulfonyl]amino]methyl]amino]-, (R)- (9CI) (CA INDEX NAME)

L21 ANSWER 10 OF 21 CAPLUS COPYRIGHT 2001 ACS (Continued)

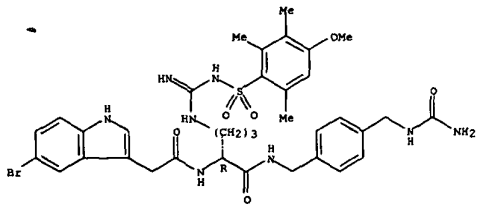
RN 191868-72-1 CAPLUS
CN 2-Naphthaleneacetamide,
N-[1-[[[4-[[[aminocarbonyl]amino]methyl]phenyl]methyl]amino]carbonyl]-4-[[imino[[4-methoxy-2,3,6-trimethylphenyl]sulfonyl]amino]methyl]amino]butyl]-, (R)- (9CI) (CA INDEX NAME)

Absolute stereochemistry.



RN 191868-75-4 CAPLUS
CN 1H-Indole-3-acetamide,
N-[1-[[[4-[[[aminocarbonyl]amino]methyl]phenyl]methyl]amino]carbonyl]-4-[[imino[[4-methoxy-2,3,6-trimethylphenyl]sulfonyl]amino]methyl]amino]butyl]-5-bromo-, (R)- (9CI) (CA INDEX NAME)

Absolute stereochemistry.



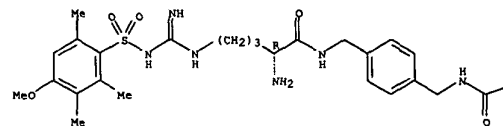
RN 191868-78-7 CAPLUS
CN Benzenepropanamide,
N-[1-[[[4-[[[aminocarbonyl]amino]methyl]phenyl]methyl]amino]carbonyl]-4-[[imino[[4-methoxy-2,3,6-trimethylphenyl]sulfonyl]amino]methyl]amino]butyl]-.beta.-phenyl-, (R)- (9CI) (CA INDEX NAME)

L21 ANSWER 10 OF 21 CAPLUS COPYRIGHT 2001 ACS (Continued)

(R)- (9CI) (CA INDEX NAME)

Absolute stereochemistry.

PAGE 1-A

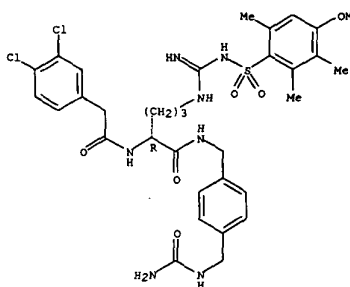


PAGE 1-B

-NH2

RN 191868-69-6 CAPLUS
CN Benzeneacetamide,
N-[1-[[[4-[[[aminocarbonyl]amino]methyl]phenyl]methyl]amino]carbonyl]-4-[[imino[[4-methoxy-2,3,6-trimethylphenyl]sulfonyl]amino]methyl]amino]butyl]-3,4-dichloro-, (R)- (9CI) (CA INDEX NAME)

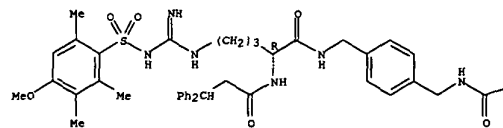
Absolute stereochemistry.



L21 ANSWER 10 OF 21 CAPLUS COPYRIGHT 2001 ACS (Continued)

Absolute stereochemistry.

PAGE 1-A

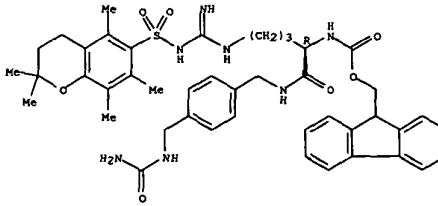


PAGE 1-B

-NH2

RN 191868-92-5 CAPLUS
CN Carbamic acid,
[1-[[[4-[[[aminocarbonyl]amino]methyl]phenyl]methyl]amino]carbonyl]-4-[[imino[[3,4-dihydro-2,2,5,7,8-pentamethyl-2H-1-benzopyran-6-yl]sulfonyl]amino]iminomethyl]amino]butyl]-, 9H-fluoren-9-ylmethyl ester, (R)- (9CI) (CA INDEX NAME)

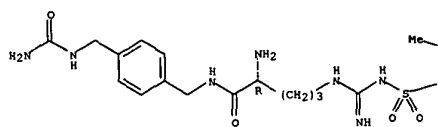
Absolute stereochemistry.



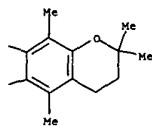
RN 191868-93-6 CAPLUS
CN Pentanamide,
2-amino-N-[[4-[[[aminocarbonyl]amino]methyl]phenyl]methyl]-5-[[imino[[3,4-dihydro-2,2,5,7,8-pentamethyl-2H-1-benzopyran-6-yl]sulfonyl]amino]iminomethyl]amino]-, (R)- (9CI) (CA INDEX NAME)

Absolute stereochemistry.

PAGE 1-A



PAGE 1-B

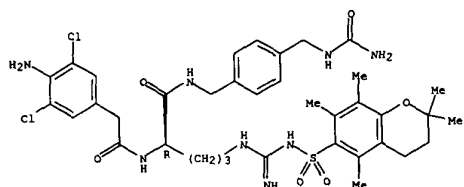


RN 191868-94-7 CAPLUS

CN Benzeneacetamide,

4-amino-N-[[[4-[[[(aminocarbonyl)amino]methyl]phenyl]methyl]methyl]amino]carbonyl]-4-[[[(3,4-dihydro-2,2,5,7,8-pentamethyl-2H-1-benzopyran-6-yl)sulfonyl]amino]iminomethyl]amino]butyl]-3,5-dichloro-, (R)- (9CI) (CA INDEX NAME)

Absolute stereochemistry.

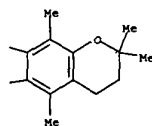


RN 191868-98-1 CAPLUS

CN 1H-Indole-2-carboxamide,

N-[[[4-[[[(aminocarbonyl)amino]methyl]phenyl]methyl]amino]carbonyl]-4-[[[(3,4-dihydro-2,2,5,7,8-pentamethyl-2H-1-benzopyran-6-yl)sulfonyl]amino]iminomethyl]amino]butyl]-3-methyl-5-phenyl-, (R)- (9CI) (CA INDEX NAME)

PAGE 1-B

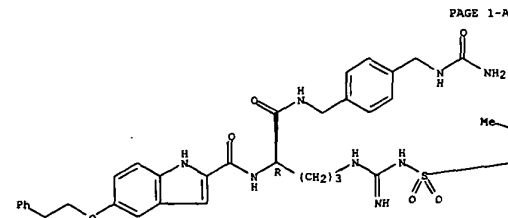


RN 191869-05-3 CAPLUS

CN 1H-Indole-2-carboxamide,

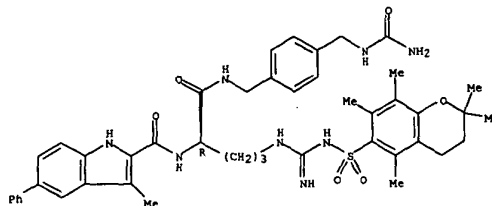
N-[[[4-[[[(aminocarbonyl)amino]methyl]phenyl]methyl]amino]carbonyl]-4-[[[(3,4-dihydro-2,2,5,7,8-pentamethyl-2H-1-benzopyran-6-yl)sulfonyl]amino]iminomethyl]amino]butyl]-5-(2-phenylethoxy)-, (R)- (9CI) (CA INDEX NAME)

Absolute stereochemistry.



PAGE 1-A

Absolute stereochemistry.



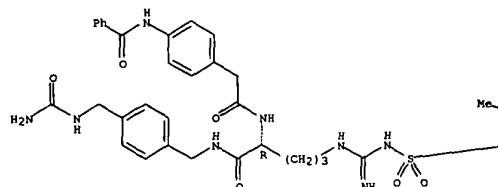
RN 191869-01-9 CAPLUS

CN Benzeneacetamide,

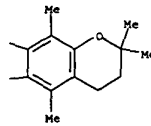
N-[[[4-[[[(aminocarbonyl)amino]methyl]phenyl]methyl]methyl]amino]carbonyl]-4-[[[(3,4-dihydro-2,2,5,7,8-pentamethyl-2H-1-benzopyran-6-yl)sulfonyl]amino]iminomethyl]amino]butyl]-4-(benzoylamino)-, (R)- (9CI) (CA INDEX NAME)

Absolute stereochemistry.

PAGE 1-A



PAGE 1-B

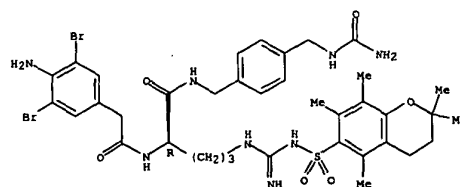


RN 191869-09-7 CAPLUS

CN Benzeneacetamide,

4-amino-N-[[[4-[[[(aminocarbonyl)amino]methyl]phenyl]methyl]amino]carbonyl]-4-[[[(3,4-dihydro-2,2,5,7,8-pentamethyl-2H-1-benzopyran-6-yl)sulfonyl]amino]iminomethyl]amino]butyl]-3,5-dibromo-, (R)- (9CI) (CA INDEX NAME)

Absolute stereochemistry.

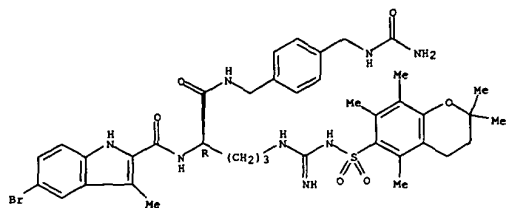


RN 191869-12-2 CAPLUS

CN 1H-Indole-2-carboxamide,

N-[[[4-[[[(aminocarbonyl)amino]methyl]phenyl]methyl]amino]carbonyl]-4-[[[(3,4-dihydro-2,2,5,7,8-pentamethyl-2H-1-benzopyran-6-yl)sulfonyl]amino]iminomethyl]amino]butyl]-5-bromo-3-methyl-, (R)- (9CI) (CA INDEX NAME)

Absolute stereochemistry.



RN 191869-33-7 CAPLUS

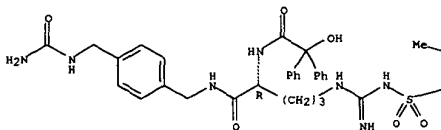
CN Benzeneacetamide,

N-[1-[[[4-[[[amino]methyl]phenyl]methyl]a

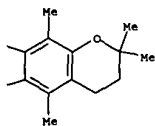
mino]carbonyl]-4-[[[(3,4-dihydro-2,2,5,7,8-pentamethyl-2H-1-benzopyran-6-yl)sulfonyl]amino]iminomethyl]amino]butyl]-.alpha.-hydroxy-.alpha.-phenyl-, (R)- (9CI) (CA INDEX NAME)

Absolute stereochemistry.

PAGE 1-A



PAGE 1-B

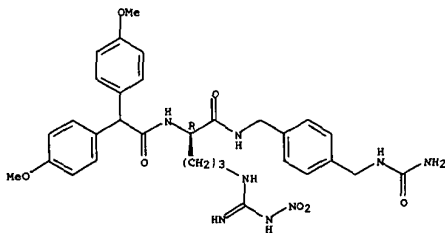


RN 191870-03-8 CAPLUS

CN Benzeneacetamide,

N-[1-[[[4-[[[amino]methyl]phenyl]methyl]a

mino]carbonyl]-4-[[[(3,4-dihydro-2,2,5,7,8-pentamethyl-2H-1-benzopyran-6-



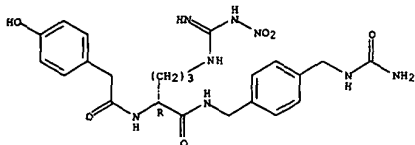
RN 191870-12-9 CAPLUS

CN Benzeneacetamide,

N-[1-[[[4-[[[amino]methyl]phenyl]methyl]a

mino]carbonyl]-4-[[[imino(nitroamino)methyl]amino]butyl]-4-hydroxy-, (R)- (9CI) (CA INDEX NAME)

Absolute stereochemistry.



RN 191870-30-1 CAPLUS

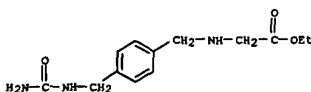
CN Glycine, N-[[[4-[[[amino]methyl]phenyl]methyl]-, ethyl

ester, mono(trifluoroacetate) (9CI) (CA INDEX NAME)

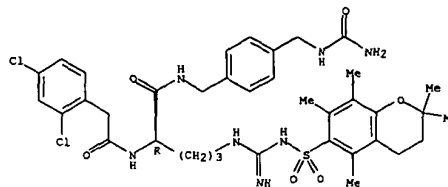
CM 1

CRN 191870-29-8

CMF C13 H19 N3 O3



Absolute stereochemistry.



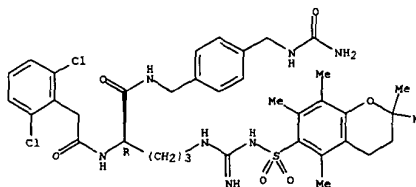
RN 191870-06-1 CAPLUS

CN Benzeneacetamide,

N-[1-[[[4-[[[amino]methyl]phenyl]methyl]a

mino]carbonyl]-4-[[[(3,4-dihydro-2,2,5,7,8-pentamethyl-2H-1-benzopyran-6-yl)sulfonyl]amino]iminomethyl]amino]butyl]-2,6-dichloro-, (R)- (9CI) (CA INDEX NAME)

Absolute stereochemistry.



RN 191870-09-4 CAPLUS

CN Benzeneacetamide,

N-[1-[[[4-[[[amino]methyl]phenyl]methyl]a

mino]carbonyl]-4-[[[imino(nitroamino)methyl]amino]butyl]-4-methoxy-.alpha.-(4-methoxyphenyl)-, (R)- (9CI) (CA INDEX NAME)

Absolute stereochemistry.

CM 2

CRN 76-05-1

CMF C2 H F3 O2



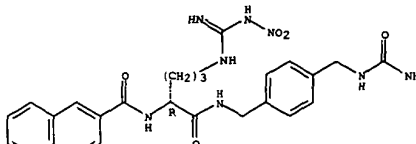
RN 191870-41-4 CAPLUS

CN 2-Naphthalenecarboxamide,

N-[1-[[[4-[[[amino]methyl]phenyl]methyl]a

methyl]amino]carbonyl]-4-[[[imino(nitroamino)methyl]amino]butyl]-, (R)- (9CI) (CA INDEX NAME)

Absolute stereochemistry.



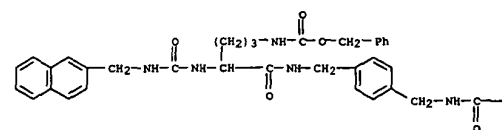
RN 191870-52-7 CAPLUS

CN Carbamic acid,

[5-[[[4-[[[amino]methyl]phenyl]methyl]amino]-

4-[[[(2-naphthalenyl)methyl]amino]carbonyl]amino]-5-oxopentyl]-, phenylmethyl ester (9CI) (CA INDEX NAME)

PAGE 1-A

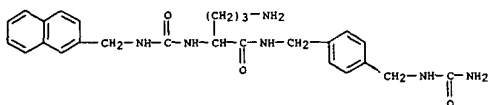


-NH₂

RN 191870-54-9 CAPLUS
 CN Pentanamide,
 5-amino-N-[[4-[[[(aminocarbonyl)amino]methyl]phenyl]methyl]-2-
 [[[(2-naphthalenyl)methyl]amino]carbonyl]amino]-, monoacetate (9CI) (CA
 INDEX NAME)

CM 1

CRN 191870-53-8
 CMF C26 H32 N6 O3



CM 2

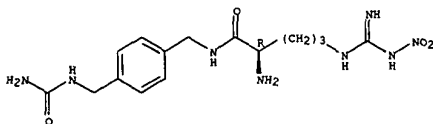
CRN 64-19-7
 CMF C2 H4 O2



RN 191870-64-1 CAPLUS
 CN Benzenepropanamide, N-[[4-[[[(aminocarbonyl)amino]methyl]phenyl]methyl]-
 .alpha.-[[[(2-butyl-1H-benzimidazol-5-yl)amino]carbonyl]amino]-3-cyano-
 (9CI) (CA INDEX NAME)

L21 ANSWER 10 OF 21 CAPLUS COPYRIGHT 2001 ACS (Continued)
 [[imino(nitroamino)methyl]amino]-, monohydrochloride, (R)- (9CI) (CA
 INDEX NAME)

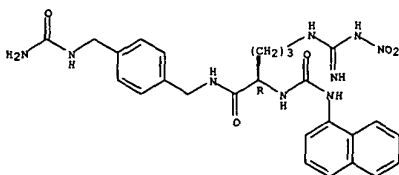
Absolute stereochemistry.



• HCl

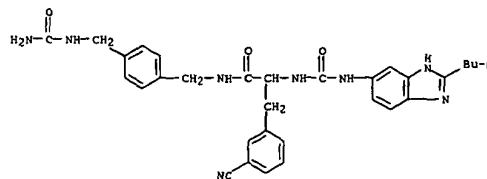
RN 191870-70-9 CAPLUS
 CN Pentanamide, N-[[4-[[[(aminocarbonyl)amino]methyl]phenyl]methyl]-5-
 [[imino(nitroamino)methyl]amino]-2-[[[(1-naphthalenyl)amino]carbonyl]amino]-
 , (R)- (9CI) (CA INDEX NAME)

Absolute stereochemistry.

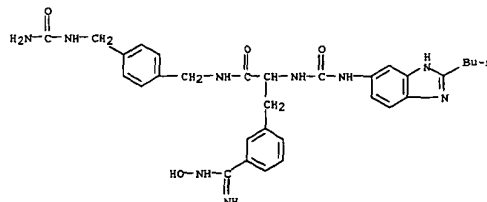


RN 191870-79-8 CAPLUS
 CN 1H-Indole-2-carboxamide,
 N-[[1-[[4-[[[(aminocarbonyl)amino]methyl]phenyl]methyl]methyl]amino]carbonyl]-4-[[imino(nitroamino)methyl]amino]butyl]-, (R)-
 (9CI) (CA INDEX NAME)

Absolute stereochemistry.

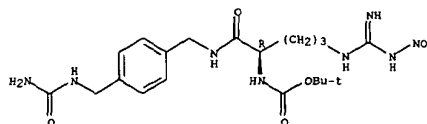


RN 191870-65-2 CAPLUS
 CN Benzenepropanamide, N-[[4-[[[(aminocarbonyl)amino]methyl]phenyl]methyl]-
 .alpha.-[[[(2-butyl-1H-benzimidazol-5-yl)amino]carbonyl]amino]-3-
 [(hydroxyamino)imino]methyl]- (9CI) (CA INDEX NAME)

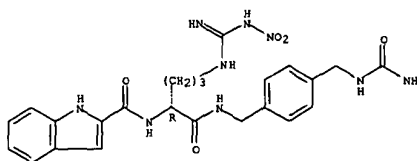


RN 191870-68-5 CAPLUS
 CN Carbamic acid,
 [1-[[[[4-[[[(aminocarbonyl)amino]methyl]phenyl]methyl]amino]carbonyl]-4-[[imino(nitroamino)methyl]amino]butyl]-, 1,1-dimethylethyl
 ester, (R)- (9CI) (CA INDEX NAME)

Absolute stereochemistry.

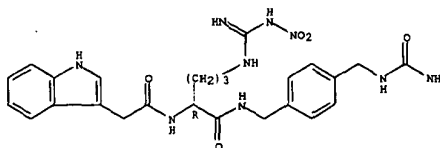


RN 191870-69-6 CAPLUS
 CN Pentanamide,
 2-amino-N-[[4-[[[(aminocarbonyl)amino]methyl]phenyl]methyl]-5-



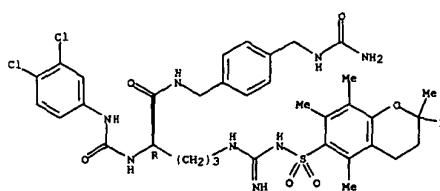
RN 191870-81-2 CAPLUS
 CN 1H-Indole-3-acetamide,
 N-[[1-[[[[4-[[[(aminocarbonyl)amino]methyl]phenyl]methyl]amino]carbonyl]-4-[[imino(nitroamino)methyl]amino]butyl]-, (R)- (9CI)
 (CA INDEX NAME)

Absolute stereochemistry.



RN 191870-84-5 CAPLUS
 CN Pentanamide,
 N-[[4-[[[(aminocarbonyl)amino]methyl]phenyl]methyl]-2-[[[(3,4-
 dichlorophenyl)amino]carbonyl]amino]-5-[[[(3,4-dihydro-2,2,5,7,8-
 pentamethyl-2H-1-benzopyran-6-yl)sulfonyl]amino]imino]methyl]amino]-, (R)-
 (9CI) (CA INDEX NAME)

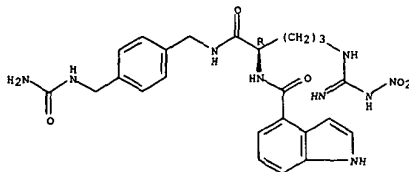
Absolute stereochemistry.



L21 ANSWER 10 OF 21 CAPLUS COPYRIGHT 2001 ACS (Continued)

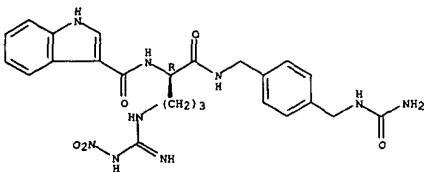
RN 191870-87-8 CAPLUS
CN 1H-Indole-4-carboxamide,
N-[1-[[[4-[[[aminocarbonyl]amino]methyl]phenyl]methyl]amino]carbonyl]-4-[[imino(nitroamino)methyl]amino]butyl]-, (R)-
(9CI) (CA INDEX NAME)

Absolute stereochemistry.



RN 191870-90-3 CAPLUS
CN 1H-Indole-3-carboxamide,
N-[1-[[[4-[[[aminocarbonyl]amino]methyl]phenyl]methyl]amino]carbonyl]-4-[[imino(nitroamino)methyl]amino]butyl]-, (R)-
(9CI) (CA INDEX NAME)

Absolute stereochemistry.



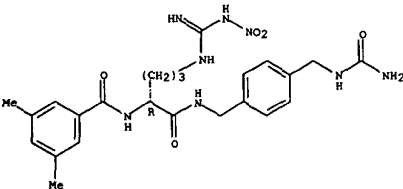
RN 191870-93-6 CAPLUS
CN 1H-Indole-5-carboxamide,
N-[1-[[[4-[[[aminocarbonyl]amino]methyl]phenyl]methyl]amino]carbonyl]-4-[[imino(nitroamino)methyl]amino]butyl]-, (R)-
(9CI) (CA INDEX NAME)

Absolute stereochemistry.

L21 ANSWER 10 OF 21 CAPLUS COPYRIGHT 2001 ACS (Continued)

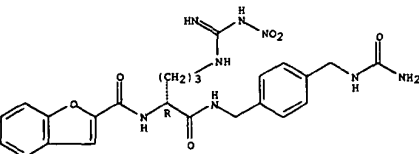
RN 191871-02-0 CAPLUS
CN Benzamide,
N-[1-[[[4-[[[aminocarbonyl]amino]methyl]phenyl]methyl]amino]carbonyl]-4-[[imino(nitroamino)methyl]amino]butyl]-3,5-dimethyl-, (R)-
(9CI) (CA INDEX NAME)

Absolute stereochemistry.



RN 191871-05-3 CAPLUS
CN 2-Benzofuranocarboxamide,
N-[1-[[[4-[[[aminocarbonyl]amino]methyl]phenyl]methyl]amino]carbonyl]-4-[[imino(nitroamino)methyl]amino]butyl]-, (R)-
(9CI) (CA INDEX NAME)

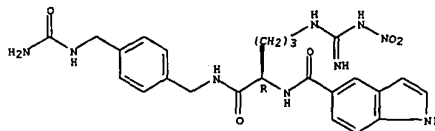
Absolute stereochemistry.



RN 191871-08-6 CAPLUS
CN 2-Naphthalenecarboxamide,
N-[1-[[[4-[[[aminocarbonyl]amino]methyl]phenyl]methyl]amino]carbonyl]-4-[[imino(nitroamino)methyl]amino]butyl]-6-methoxy-, (R)-
(9CI) (CA INDEX NAME)

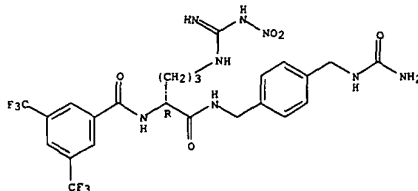
Absolute stereochemistry.

L21 ANSWER 10 OF 21 CAPLUS COPYRIGHT 2001 ACS (Continued)



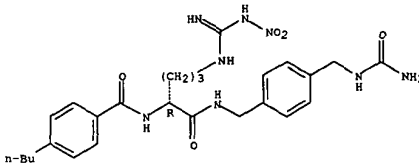
RN 191870-96-9 CAPLUS
CN Benzamide,
N-[1-[[[4-[[[aminocarbonyl]amino]methyl]phenyl]methyl]amino]carbonyl]-4-[[imino(nitroamino)methyl]amino]butyl]-3,5-bis(trifluoromethyl)-, (R)-
(9CI) (CA INDEX NAME)

Absolute stereochemistry.



RN 191870-99-2 CAPLUS
CN Benzamide,
N-[1-[[[4-[[[aminocarbonyl]amino]methyl]phenyl]methyl]amino]carbonyl]-4-[[imino(nitroamino)methyl]amino]butyl]-4-butyl-, (R)-
(9CI) (CA INDEX NAME)

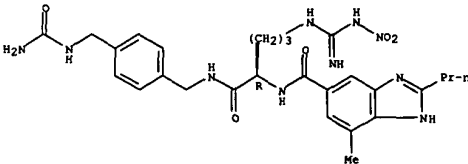
Absolute stereochemistry.



L21 ANSWER 10 OF 21 CAPLUS COPYRIGHT 2001 ACS (Continued)

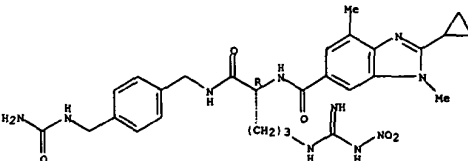
RN 191871-11-1 CAPLUS
CN 1H-Benzimidazole-5-carboxamide,
N-[1-[[[4-[[[aminocarbonyl]amino]methyl]phenyl]methyl]amino]carbonyl]-4-[[imino(nitroamino)methyl]amino]butyl]-7-methyl-2-propyl-, (R)-
(9CI) (CA INDEX NAME)

Absolute stereochemistry.



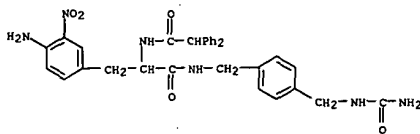
RN 191871-15-5 CAPLUS
CN 1H-Benzimidazole-6-carboxamide,
N-[1-[[[4-[[[aminocarbonyl]amino]methyl]phenyl]methyl]amino]carbonyl]-4-[[imino(nitroamino)methyl]amino]butyl]-2-cyclopropyl-1,4-dimethyl-, (R)-
(9CI) (CA INDEX NAME)

Absolute stereochemistry.

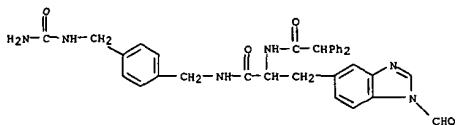


RN 191871-29-1 CAPLUS

L21 ANSWER 10 OF 21 CAPLUS COPYRIGHT 2001 ACS (Continued)
 CN Benzenepropanamide,
 4-amino-N-[[4-[[[(aminocarbonyl)amino]methyl]phenyl]methyl]-1-phenyl]-.alpha.-[[diphenylacetyl]amino]-3-nitro- (9CI) (CA INDEX NAME)

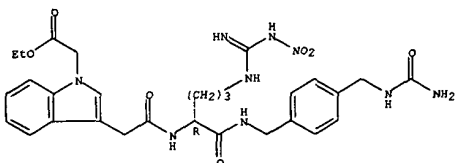


RN 191871-30-4 CAPLUS
 CN 1H-Benzimidazole-5-propanamide,
 N-[[4-[[[(aminocarbonyl)amino]methyl]phenyl]methyl]-.alpha.-[[diphenylacetyl]amino]-1-formyl- (9CI) (CA INDEX NAME)



RN 191871-46-2 CAPLUS
 CN 1H-Indole-1-acetic acid,
 3-[2-[[1-[[[4-[[[(aminocarbonyl)amino]methyl]phenyl]methyl]amino]carbonyl]-4-[[imino(nitroamino)methyl]amino]butyl]amino]-2-oxoethyl]-, ethyl ester, (R)- (9CI) (CA INDEX NAME)

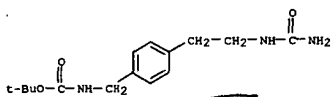
Absolute stereochemistry.



RN 191871-52-0 CAPLUS
 CN 1H-Indole-3-acetamide,
 N-[1-[[[4-[[[(aminocarbonyl)amino]methyl]phenyl]met

L21 ANSWER 10 OF 21 CAPLUS COPYRIGHT 2001 ACS (Continued)

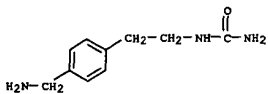
RN 191871-76-8 CAPLUS
 CN Carbamic acid, [[4-[[2-[[[(aminocarbonyl)amino]ethyl]phenyl]methyl]-, 1,1-dimethylethyl ester (9CI) (CA INDEX NAME)



RN 191871-78-0 CAPLUS
 CN Urea, [2-[[4-[[aminomethyl]phenyl]ethyl]-, mono(trifluoroacetate) (9CI)
 (CA INDEX NAME)

CM 1

CRN 191871-77-9
 CMF C10 H15 N3 O



CM 2

CRN 76-05-1
 CMF C2 H F3 O2

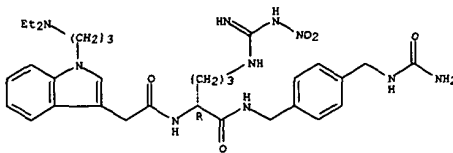


RN 191871-79-1 CAPLUS
 CN Benzeneacetamide,
 N-[1-[[[4-[[2-[[[(aminocarbonyl)amino]ethyl]phenyl]methyl]amino]carbonyl]-4-[[imino(nitroamino)methyl]amino]butyl]-.alpha.-phenyl]-, (R)- (9CI) (CA INDEX NAME)

Absolute stereochemistry.

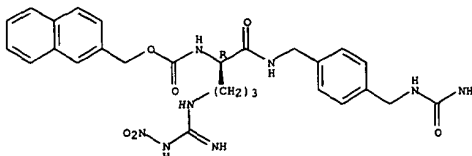
L21 ANSWER 10 OF 21 CAPLUS COPYRIGHT 2001 ACS (Continued)
 hyl]amino]carbonyl]-4-[[imino(nitroamino)methyl]amino]butyl]-1-[3-(diethylamino)propyl]-, (R)- (9CI) (CA INDEX NAME)

Absolute stereochemistry.



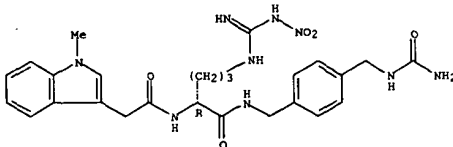
RN 191871-62-2 CAPLUS
 CN Carbamic acid,
 [1-[[[4-[[[(aminocarbonyl)amino]methyl]phenyl]methyl]amino]carbonyl]-4-[[imino(nitroamino)methyl]amino]butyl]-, 2-naphthalenylmethyl ester, (R)- (9CI) (CA INDEX NAME)

Absolute stereochemistry.

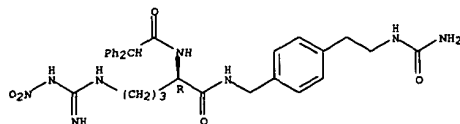


RN 191871-65-5 CAPLUS
 CN 1H-Indole-3-acetamide,
 N-[1-[[[4-[[[(aminocarbonyl)amino]methyl]phenyl]methyl]amino]carbonyl]-4-[[imino(nitroamino)methyl]amino]butyl]-1-methyl-, (R)- (9CI) (CA INDEX NAME)

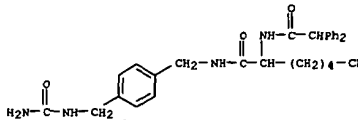
Absolute stereochemistry.



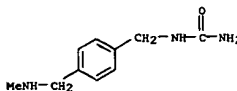
L21 ANSWER 10 OF 21 CAPLUS COPYRIGHT 2001 ACS (Continued)



RN 191871-85-9 CAPLUS
 CN Benzeneacetamide,
 N-[1-[[[4-[[[(aminocarbonyl)amino]methyl]phenyl]methyl]amino]carbonyl]-5-cyanopentyl]-.alpha.-phenyl- (9CI) (CA INDEX NAME)



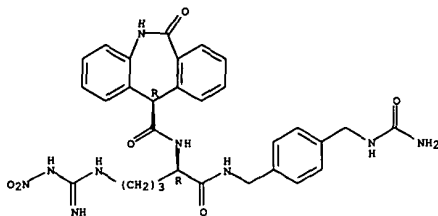
RN 191871-93-9 CAPLUS
 CN Urea, [[4-[[methylamino]methyl]phenyl]methyl]-, monohydrochloride (9CI) (CA INDEX NAME)



• HCl

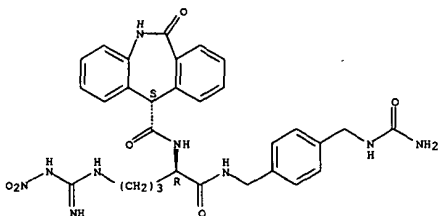
RN 191872-00-1 CAPLUS
 CN 5H-Dibenz[b,e]azepine-11-carboxamide, N-[1-[[[4-[[[(aminocarbonyl)amino]methyl]phenyl]methyl]amino]carbonyl]-4-[[imino(nitroamino)methyl]amino]butyl]-6,11-dihydro-6-oxo-, [R-(R*,R*)]- (9CI) (CA INDEX NAME)

Absolute stereochemistry.



RN 191872-01-2 CAPLUS
 CN 5H-Dibenz[b,e]azepine-11-carboxamide, N-[1-[[[4-[[[amino]methyl]phenyl]methyl]amino]carbonyl]-4-[[imino(nitroamino)methyl]amino]butyl]-6,11-dihydro-6-oxo-, [R-(R*,S*)]-(9CI) (CA INDEX NAME)

Absolute stereochemistry.

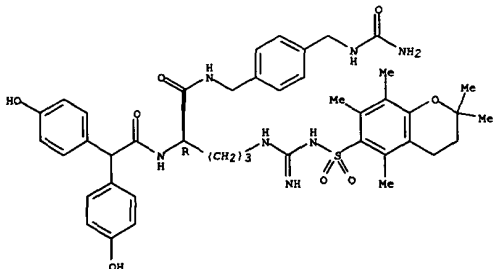


RN 191872-06-7 CAPLUS
 CN Benzeneacetamide, N-[1-[[[4-[[[amino]methyl]phenyl]methyl]amino]carbonyl]-4-[[imino(nitroamino)methyl]amino]butyl]-6,11-dihydro-6-oxo-, [R-(R*,S*)]-(9CI) (CA INDEX NAME)

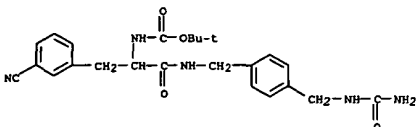
Absolute stereochemistry.

L21 ANSWER 10 OF 21 CAPLUS COPYRIGHT 2001 ACS (Continued)
 yl)sulfonyl]amino]iminomethyl]amino]butyl]-4-hydroxy-.alpha.-(4-hydroxyphenyl)-, (R)- (9CI) (CA INDEX NAME)

Absolute stereochemistry.



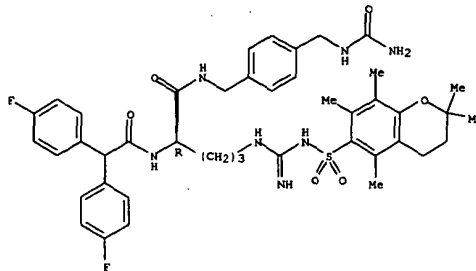
RN 191872-33-0 CAPLUS
 CN Carbamic acid, [2-[[[4-[[[amino]methyl]phenyl]methyl]amino]-1-[[[3-cyanophenyl]methyl]-2-oxoethyl]-, 1,1-dimethylethyl ester (9CI) (CA INDEX NAME)



RN 191872-35-2 CAPLUS
 CN Benzenepropanamide, .alpha.-amino-N-[[4-[[[amino]methyl]phenyl]methyl]amino]-3-cyano-, mono(trifluoroacetate) (9CI) (CA INDEX NAME)

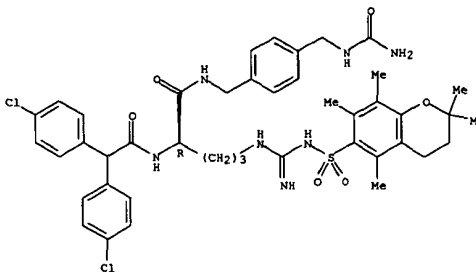
CM 1

CRN 191872-34-1
 CHF C19 H21 N5 O2



RN 191872-09-0 CAPLUS
 CN Benzeneacetamide, N-[1-[[[4-[[[amino]methyl]phenyl]methyl]amino]carbonyl]-4-[[imino(nitroamino)methyl]amino]butyl]-6,11-dihydro-6-oxo-, [R-(R*,S*)]-(9CI) (CA INDEX NAME)

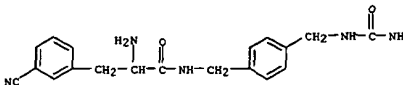
Absolute stereochemistry.



RN 191872-25-0 CAPLUS
 CN Benzeneacetamide, N-[1-[[[4-[[[amino]methyl]phenyl]methyl]amino]carbonyl]-4-[[imino(nitroamino)methyl]amino]butyl]-6,11-dihydro-6-oxo-, [R-(R*,S*)]-(9CI) (CA INDEX NAME)

Absolute stereochemistry.

L21 ANSWER 10 OF 21 CAPLUS COPYRIGHT 2001 ACS (Continued)

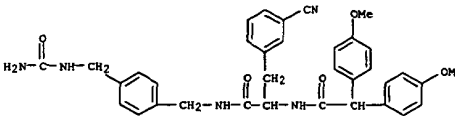


CM 2

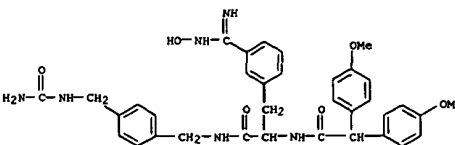
CRN 76-05-1
 CHF C2 H F3 O2



RN 191872-36-3 CAPLUS
 CN Benzenepropanamide, N-[[4-[[[amino]methyl]phenyl]methyl]-.alpha.-[[bis(4-methoxyphenyl)acetyl]amino]-3-cyano- (9CI) (CA INDEX NAME)

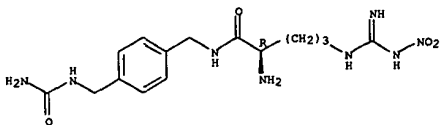


RN 191872-37-4 CAPLUS
 CN Benzenepropanamide, N-[[4-[[[amino]methyl]phenyl]methyl]-.alpha.-[[bis(4-methoxyphenyl)acetyl]amino]-3-((hydroxyamino)iminomethyl)- (9CI) (CA INDEX NAME)



RN 191872-46-5 CAPLUS
 CN Pentanamide, 2-amino-N-[[4-[[[amino]methyl]phenyl]methyl]-5-

Absolute stereochemistry.



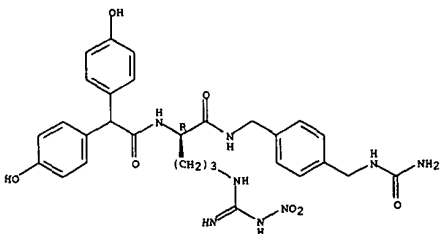
RN 191872-47-6 CAPLUS

CN Benzeneacetamide,

N-[[1-[[[4-[[[aminocarbonyl]amino]methyl]phenyl]methyl]a

mino]carbonyl]-4-[[imino(nitroamino)methyl]amino]butyl]-4-hydroxy-.alpha.-
(4-hydroxyphenyl)-, (R)- (9CI) (CA INDEX NAME)

Absolute stereochemistry.



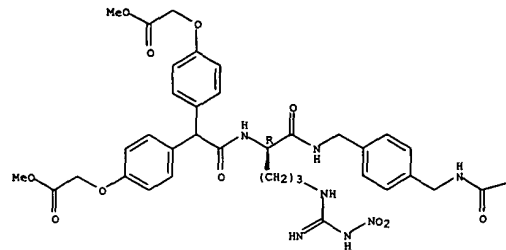
RN 191872-48-7 CAPLUS

CN Acetic acid,

2,2'-[[2-[[1-[[[4-[[[aminocarbonyl]amino]methyl]phenyl]methyl]amino]carbonyl]-4-[[imino(nitroamino)methyl]amino]butyl]amino]-2-oxoethylidene]bis(4,1-phenyleneoxy)]bis-, dimethyl ester, (R)- (9CI) (CA INDEX NAME)

Absolute stereochemistry.

PAGE 1-A



PAGE 1-B

-NH2

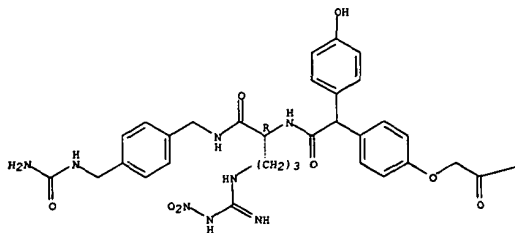
RN 191872-51-2 CAPLUS

CN Acetic acid,

[4-[2-[[1-[[[4-[[[aminocarbonyl]amino]methyl]phenyl]methyl]amino]carbonyl]-4-[[imino(nitroamino)methyl]amino]butyl]amino]-1-(4-hydroxyphenyl)-2-oxoethyl]phenoxy]-, methyl ester, (1R)- (9CI) (CA INDEX NAME)

Absolute stereochemistry.

PAGE 1-A



PAGE 1-B

-OMe

RN 191872-53-4 CAPLUS

CN Acetic acid,

[4-[2-[[1-[[[4-[[[aminocarbonyl]amino]methyl]phenyl]methyl]amino]carbonyl]-4-[[imino(nitroamino)methyl]amino]butyl]amino]-1-(4-hydroxyphenyl)-2-oxoethyl]phenoxy]-, methyl ester, (1R)-, monoacetate (salt) (9CI) (CA INDEX NAME)

mino]carbonyl]-4-[[aminoinimomethyl]amino]butyl]amino]-1-(4-hydroxyphenyl)-
2-oxoethyl]phenoxy]-, methyl ester, (1R)-, monoacetate (salt) (9CI) (CA INDEX NAME)

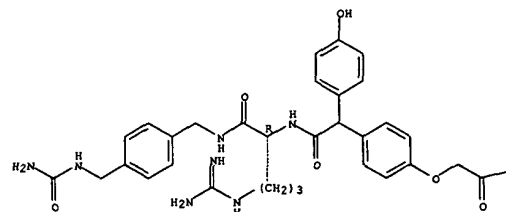
CM 1

CRN 191872-52-3

CMF C32 H39 N7 O7

Absolute stereochemistry.

PAGE 1-A



PAGE 1-B

-OMe

CM 2

CRN 64-19-7

CMF C2 H4 O2

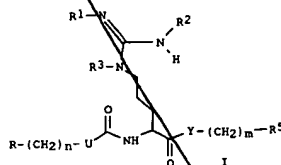
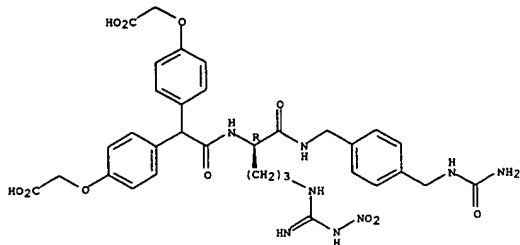


RN 191872-54-5 CAPLUS

CN Acetic acid,

2,2'-[[2-[[1-[[[4-[[[aminocarbonyl]amino]methyl]phenyl]methyl]amino]carbonyl]-4-[[imino(nitroamino)methyl]amino]butyl]amino]-2-oxoethylidene]bis(4,1-phenyleneoxy)]bis-, (R)- (9CI) (CA INDEX NAME)

Absolute stereochemistry.



AB Title compds. I [R = (un)substituted (hetero)cycle; n = 0-2; U = bond, O, NH; R1 = C2-5-(un)substituted alkylcarbonyl, substituted PhCO; R2 = H, Me,

(un)substituted alkyl; R3 = H, alkyl; Y = O, NHR4; R4 = H, C1-6-alkyl, PhCH2; m = 1, 2; R5 = (un)substituted Ph], neuropeptide Y antagonists, were prepd. Thus, (R)-R6NH-(NO2)NH(CH2)3CH(NHR7)CONHCH2C6H4OR5-4 (II) (R6 = CONHMe, R7 = CO2Me3) was prepd. from MeNCO and II (R6 = H, R7 = CO2Me2), diphenyl-acetylated, and the product hydrogenated to give II-acetate (R5 = CONHMe, R6 = COCHPh2). Title compds. showed activity as neuropeptide Y antagonists in both in vitro (at 10⁻⁸ to 10⁻⁵ M) and in vivo tests (at 0.001 to 10 mg/kg).

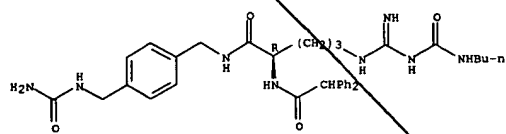
ACCESSION NUMBER: 1997:473594 CAPLUS
DOCUMENT NUMBER: 127:81787
TITLE: Preparation of amino acid derivatives as neuropeptide Y antagonists
INVENTOR(S): Engel, Wolfhard; Ebellein, Wolfgang; Rudolf, Klaus; Doods, Henri; Wieland, Heike-Andrea; Willim, Klaus-Dieter
PATENT ASSIGNEE(S): Dr. Karl Thomae Gmbh, Germany
SOURCE: Ger. Offen., 59 pp.
CODING: GWXEXX
Patent
German
FAMILY ACC. NUM. COUNT: 2
PATENT INFORMATION:

PATENT NO.	KIND	DATE	APPLICATION NO.	DATE
DE 19544686	A1	19970605	DE 1995-19544686	19951130
WO 9719914	A1	19970605	WO 1996-EP5214	19961126
W: CA, JP, MX, US				
RW: AT, BE, CH, DE, DK, ES, FI, FR, GB, GR, IE, IT, LU, MC, NL, PT.				
EP 865426	A1	19980923	EP 1996-939927	19961126
R: AT, BE, CH, DE, DK, ES, FR, GB, GR, IT, LI, LU, NL, SE, MC, PT, IE, FI				
JP 2000501389	T2	20000208	JP 1997-520162	19961126
US 6040289	A	20000321	US 1998-77663	19980529
PRIORITY APPLN. INFO.: DE 1995-19544686 A 19951130 WO 1996-EP5214 W 19961126				
OTHER SOURCE(S): MARPAT 127:81787				
IT 191854-66-7P 191854-67-8P 191854-76-9P				

191854-77-0P 191854-78-2P 191854-80-5P
191854-00-2P 191855-01-3P 191855-15-9P
191855-16-0P 191855-17-1P 191855-24-0P
191855-78-8P 191855-73-9P
RL: BAC (biological activity or effector, except adverse); SPN (Synthetic preparation); THU (Therapeutic use); BIOL (Biological study); PREP (Preparation); USES (Uses)
(prepn. of amino acid derivs. as neuropeptide Y antagonists)

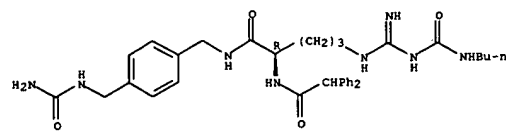
RN 191854-66-7 CAPLUS
CN Benzeneacetamide,
N-[1-[[[4-[[[aminocarbonyl]amino]methyl]phenyl]methyl]amino]carbonyl]-4-[[[butylamino]carbonyl]amino]iminomethyl]amino]butyl]-.alpha.-phenyl-, (R)-, (9CI) (CA INDEX NAME)

Absolute stereochemistry.



RN 191854-67-8 CAPLUS
CN Benzeneacetamide,
N-[1-[[[4-[[[aminocarbonyl]amino]methyl]phenyl]methyl]amino]carbonyl]-4-[[[butylamino]carbonyl]amino]iminomethyl]amino]butyl]-.alpha.-phenyl-, (R)-, monoacetate (9CI) (CA INDEX NAME)
CM 1
CRN 191854-66-7
CMF C34 H44 N8 O4

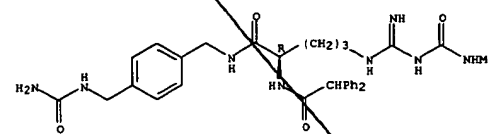
Absolute stereochemistry.



CM 2
CRN 64-19-7
CMF C2 H4 O2

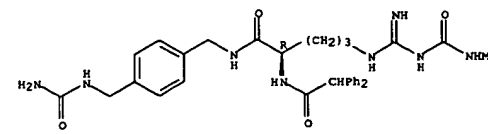
RN 191854-66-9 CAPLUS
CN Benzeneacetamide,
N-[1-[[[4-[[[aminocarbonyl]amino]methyl]phenyl]methyl]amino]carbonyl]-4-[[[imino[[methylamino]carbonyl]amino]methyl]amino]butyl]-.alpha.-phenyl-, (R)-, (9CI) (CA INDEX NAME)

Absolute stereochemistry.



RN 191854-77-0 CAPLUS
CN Benzeneacetamide,
N-[1-[[[4-[[[aminocarbonyl]amino]methyl]phenyl]methyl]amino]carbonyl]-4-[[[imino[[methylamino]carbonyl]amino]methyl]amino]butyl]-.alpha.-phenyl-, (R)-, monoacetate (9CI) (CA INDEX NAME)
CM 1
CRN 191854-76-9
CMF C31 H38 N8 O4

Absolute stereochemistry.



CM 2
CRN 64-19-7
CMF C2 H4 O2